

bs-13975R**[Primary Antibody]****CD44v10 Rabbit pAb****BioSS**
ANTIBODIES

www.bioss.com.cn

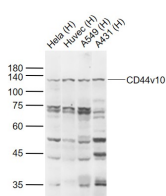
sales@bioss.com.cn

techsupport@bioss.com.cn

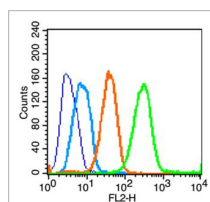
400-901-9800

— DATASHEET —

Host: Rabbit	Isotype: IgG	Applications: WB (1:500-2000) Flow-Cyt (1µg/Test)
Clonality: Polyclonal		Reactivity: Human
GeneID: 960	SWISS: P16070	
Target: CD44v10		
Immunogen: KLH conjugated synthetic peptide derived from human CD44v10: 218-223+472-477/742, 223=T -> N. < Extracellular >		
Purification: affinity purified by Protein A		
Concentration: 1mg/ml		
Storage: 0.01M TBS (pH7.4) with 1% BSA, 0.02% Proclin300 and 50% Glycerol. Shipped at 4°C. Store at -20°C for one year. Avoid repeated freeze/thaw cycles.		
Background: The protein encoded by this gene is a cell-surface glycoprotein involved in cell-cell interactions, cell adhesion and migration. It is a receptor for hyaluronic acid (HA) and can also interact with other ligands, such as osteopontin, collagens, and matrix metalloproteinases (MMPs). This protein participates in a wide variety of cellular functions including lymphocyte activation, recirculation and homing, hematopoiesis, and tumor metastasis. Transcripts for this gene undergo complex alternative splicing that results in many functionally distinct isoforms, however, the full length nature of some of these variants has not been determined. Alternative splicing is the basis for the structural and functional diversity of this protein, and may be related to tumor metastasis. [provided by RefSeq, Jul 2008].		
		Predicted MW.: 52/82 kDa
		Subcellular Location: Cell membrane

— VALIDATION IMAGES —

Sample: Lane 1: Hela (Human) Cell Lysate at 30 ug
 Lane 2: Huvec (Human) Cell Lysate at 30 ug
 Lane 3: A549 (Human) Cell Lysate at 30 ug
 Lane 4: A431 (Human) Cell Lysate at 30 ug
 Primary: Anti-CD44v10 (bs-13975R) at 1/1000 dilution
 Secondary: IRDye800CW Goat Anti-Rabbit IgG at 1/20000 dilution
 Predicted band size: 110-180 kD
 Observed band size: 110-180 kD



Blank control (blue line): U251 (fixed with 70% ethanol overnight at 4°C and then permeabilized with 0.1% PBS-Tween for 20 min at room temperature).
 Primary Antibody (green line): Rabbit Anti-CD44v10 antibody (bs-13975R), Dilution: 0.2 µg /10⁶ cells; Isotype Control Antibody (orange line): Rabbit IgG .
 Secondary Antibody (white blue line): Goat anti-rabbit IgG-PE, Dilution: 1µg /test.