

bs-17286R

[Primary Antibody]

SCIN Rabbit pAb

BioSS
ANTIBODIES

www.bioss.com.cn

sales@bioss.com.cn

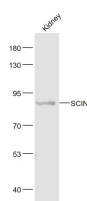
techsupport@bioss.com.cn

400-901-9800

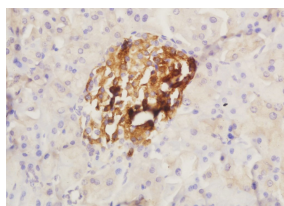
— DATASHEET —

Host: Rabbit	Isotype: IgG	Applications: WB (1:500-2000)
Clonality: Polyclonal		IHC-P (1:100-500)
GeneID: 85477	SWISS: Q9Y6U3	IHC-F (1:100-500)
Target: SCIN		IF (1:100-500)
Immunogen: KLH conjugated synthetic peptide derived from human SCIN: 625-715/715.		
Purification: affinity purified by Protein A		Reactivity: Mouse, Rat (predicted: Human, Sheep, Cow, Dog, Horse)
Concentration: 1mg/ml		
Storage: 0.01M TBS (pH7.4) with 1% BSA, 0.02% Proclin300 and 50% Glycerol. Shipped at 4°C. Store at -20°C for one year. Avoid repeated freeze/thaw cycles.		Predicted MW.: 80 kDa
Background: SCIN (Scinderin) is a Ca(2+) dependent actin filament severing protein that is presumed to have a regulatory function in exocytosis by affecting the organization of the microfilament network underneath the plasma membrane. In vitro SCIN also has barbed end capping and nucleating activities in the presence of Ca(2+).		Subcellular Location: Cytoplasm

— VALIDATION IMAGES —



Sample: Kidney (Mouse) Lysate at 40 ug Primary:
Anti- SCIN (bs-17286R) at 1/1000 dilution
Secondary: IRDye800CW Goat Anti-Rabbit IgG at
1/20000 dilution Predicted band size: 80 kD
Observed band size: 86 kD



Paraformaldehyde-fixed, paraffin embedded (rat pancreas); Antigen retrieval by boiling in sodium citrate buffer (pH6.0) for 15min; Block endogenous peroxidase by 3% hydrogen peroxide for 20 minutes; Blocking buffer (normal goat serum) at 37°C for 30min; Antibody incubation with (SCIN) Polyclonal Antibody, Unconjugated (bs-17286R) at 1:200 overnight at 4°C, followed by operating according to SP Kit(Rabbit) (sp-0023) instructions and DAB staining.