

**bs-17285R****[ Primary Antibody ]**

## Schlafen 8 Rabbit pAb

**BioSS**  
ANTIBODIES

www.bioss.com.cn

sales@bioss.com.cn

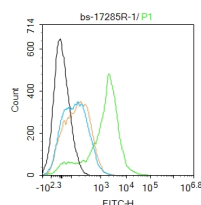
techsupport@bioss.com.cn

400-901-9800

### — DATASHEET —

<b>Host:</b> Rabbit	<b>Isotype:</b> IgG	<b>Applications:</b> Flow-Cyt (1ug/Test)
<b>Clonality:</b> Polyclonal		<b>Reactivity:</b> Mouse
<b>GeneID:</b> 276950	<b>SWISS:</b> B1ARD8	
<b>Target:</b> Schlafen 8		
<b>Immunogen:</b> KLH conjugated synthetic peptide derived from mouse Schlafen 8: 831-910/910.		<b>Predicted MW.:</b> 104 kDa
<b>Purification:</b> affinity purified by Protein A		
<b>Concentration:</b> 1mg/ml		
<b>Storage:</b> 0.01M TBS (pH7.4) with 1% BSA, 0.02% Proclin300 and 50% Glycerol. Shipped at 4°C. Store at -20°C for one year. Avoid repeated freeze/thaw cycles.		
<b>Background:</b> The regulatory networks governing development and differentiation of hematopoietic cells are incompletely understood. Members of the Schlafen protein family have been implicated in the regulation of cell growth and T cell development. Four new members, Schlafen 5, Schlafen 8, Schlafen 9 and Schlafen 10, which belong to a distinct subgroup within this gene family have been identified and chromosomally mapped. The characteristic feature of these proteins is the presence of sequence motifs identifying them as distinct members of the superfamily I of DNA/RNA helicases.		

### — VALIDATION IMAGES —



Blank control: Mouse spleen. Primary Antibody (green line): Rabbit Anti-Schlafen 8 antibody (bs-17285R) Dilution: 1ug/Test; Secondary Antibody : Goat anti-rabbit IgG-FITC Dilution: 0.5ug/Test. Protocol The cells were fixed with 4% PFA (10min at room temperature) and then permeabilized with 0.1% PBST for 20 min at room temperature. The cells were then incubated in 5% BSA to block non-specific protein-protein interactions for 30 min at room temperature. Cells stained with Primary Antibody for 30 min at room temperature. The secondary antibody used for 40 min at room temperature. Acquisition of 20,000 events was performed.