

SCGF Rabbit pAb

Catalog Number: bs-17284R

Target Protein: SCGF

Concentration: 1mg/ml

Form: Liquid

Host: Rabbit

Clonality: Polyclonal

Isotype: IgG

Applications: IHC-P (1:100-500), IHC-F (1:100-500), IF (1:100-500)

Reactivity: Human

Predicted MW: 34 kDa

Entrez Gene: 6320

Swiss Prot: Q9Y240

Source: KLH conjugated synthetic peptide derived from human SCGF: 101-200/323.

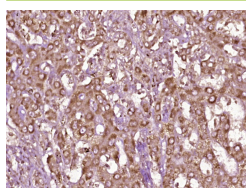
Purification: affinity purified by Protein A

Storage: 0.01M TBS (pH7.4) with 1% BSA, 0.02% Proclin300 and 50% Glycerol.

Shipped at 4°C. Store at -20°C for one year. Avoid repeated freeze/thaw cycles.

Background: SCGF is a cytokine for primitive hematopoietic progenitor cells and exhibits species-specific activity. It is predominantly expressed in proliferating chondrocytes, bone marrow cells, the periosteum and the perichondrium of skeletal tissues. SCGF contains an N-terminal Arg-Gly-Asp triplet (RGD triplet), leucine zipper domains, a C-terminal C-type lectin domain and numerous potential glycosylation sites. It has burst-promoting activity and granulocyte/macrophage colony-promoting activity in vitro. SCGF is directly correlated to granulocyte recovery following stem cell transplantation and thus can be an indicator of hematopoietic recovery following stem cell transplantation.

VALIDATION IMAGES



Paraformaldehyde-fixed, paraffin embedded (human liver carcinoma); Antigen retrieval by boiling in sodium citrate buffer (pH6.0) for 15min; Block endogenous peroxidase by 3% hydrogen peroxide for 20 minutes; Blocking buffer (normal goat serum) at 37°C for 30min; Antibody incubation with (SCGF) Polyclonal Antibody, Unconjugated (bs-17284R) at 1:400 overnight at 4°C, followed by operating according to SP Kit(Rabbit) (sp-0023) instructions and DAB staining.