

bs-19288R**[Primary Antibody]****NMD3 Rabbit pAb****Bioss**
ANTIBODIES

www.bioss.com.cn

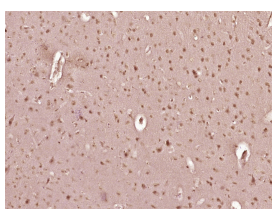
sales@bioss.com.cn

techsupport@bioss.com.cn

400-901-9800

— DATASHEET —

Host: Rabbit	Isotype: IgG	Applications: IHC-P (1:100-500) IHC-F (1:100-500) IF (1:100-500) Reactivity: Mouse (predicted: Human, Rabbit, Pig, Sheep, Cow, Dog, Horse) Predicted MW.: 58 kDa Subcellular Location: Cytoplasm ,Nucleus
Clonality: Polyclonal		
GeneID: 51068	SWISS: Q96D46	
Target: NMD3		
Immunogen: KLH conjugated synthetic peptide derived from human NMD3: 301-400/503.		
Purification: affinity purified by Protein A		
Concentration: 1mg/ml		
Storage: 0.01M TBS (pH7.4) with 1% BSA, 0.02% Proclin300 and 50% Glycerol. Shipped at 4°C. Store at -20°C for one year. Avoid repeated freeze/thaw cycles.		
Background: Ribosomes are composed of 60S and 40S subunits that are assembled in the nucleolus and exported to the cytoplasm through nuclear pore complexes in the nuclear envelope. NMD3 is an adaptor for 60S subunit export via the CRM1 (XPO1; MIM 602559) pathway (Trotta et al., 2003 [PubMed 12773398]).[supplied by OMIM, Mar 2008]		

— VALIDATION IMAGES —

Paraformaldehyde-fixed, paraffin embedded (Mouse brain); Antigen retrieval by boiling in sodium citrate buffer (pH6.0) for 15min; Block endogenous peroxidase by 3% hydrogen peroxide for 20 minutes; Blocking buffer (normal goat serum) at 37°C for 30min; Antibody incubation with (NMD3) Polyclonal Antibody, Unconjugated (bs-19288R) at 1:400 overnight at 4°C, followed by operating according to SP Kit(Rabbit) (sp-0023) instructions and DAB staining.