

bs-19286R**[Primary Antibody]****NLRP14 Rabbit pAb****BioSS**
ANTIBODIES

www.bioss.com.cn

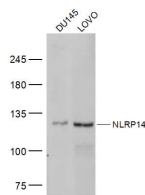
sales@bioss.com.cn

techsupport@bioss.com.cn

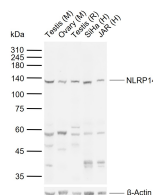
400-901-9800

— DATASHEET —

Host: Rabbit	Isotype: IgG	Applications: WB (1:500-2000)
Clonality: Polyclonal		Reactivity: Human, Mouse, Rat
GeneID: 338323	SWISS: Q86W24	
Target: NLRP14		
Immunogen: KLH conjugated synthetic peptide derived from human NLRP14: 81-180/1093.		Predicted MW.: 125 kDa
Purification: affinity purified by Protein A		Subcellular Location: Cytoplasm
Concentration: 1mg/ml		
Storage: 0.01M TBS (pH7.4) with 1% BSA, 0.02% Proclin300 and 50% Glycerol. Shipped at 4°C. Store at -20°C for one year. Avoid repeated freeze/thaw cycles.		
Background: The protein encoded by this gene belongs to the NALP protein family. Members of the NALP protein family typically contain a NACHT domain, a NACHT-associated domain (NAD), a C-terminal leucine-rich repeat (LRR) region, and an N-terminal pyrin domain (PYD). This protein may play a regulatory role in the innate immune system as similar family members belong to the signal-induced multiprotein complex, the inflammasome, that activates the pro-inflammatory caspases, caspase-1 and caspase-5. [provided by RefSeq, Jul 2008]		

— VALIDATION IMAGES —

Sample: DU145(Human) Cell Lysate at 30 ug
LOVO(Human) Cell Lysate at 30 ug Primary: Anti-NLRP14 (bs-19286R) at 1/300 dilution Secondary: IRDye800CW Goat Anti-Rabbit IgG at 1/20000 dilution Predicted band size: 125 kD Observed band size: 125 kD



Sample: Lane 1: Mouse Testis tissue lysates Lane 2: Mouse Ovary tissue lysates Lane 3: Rat Testis tissue lysates Lane 4: Human SiHa cell lysates Lane 5: Human JAR cell lysates Primary: Anti-NLRP14 (bs-19286R) at 1/1000 dilution Secondary: IRDye800CW Goat Anti-Rabbit IgG at 1/20000 dilution Predicted band size: 125 kDa Observed band size: 138 kDa