

NLRC3 Rabbit pAb

Catalog Number: bs-19282R

Target Protein: NLRC3

Concentration: 1mg/ml

Form: Liquid

Host: Rabbit

Clonality: Polyclonal

Isotype: IgG

Applications: WB (1:500-2000)

Reactivity: Human (predicted:Mouse, Pig, Sheep, Cow)

Predicted MW: 115 kDa

Entrez Gene: 197358

Swiss Prot: Q7RTR2

Source: KLH conjugated synthetic peptide derived from human NLRC3: 721-820/1065.

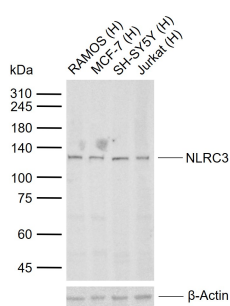
Purification: affinity purified by Protein A

Storage: 0.01M TBS (pH7.4) with 1% BSA, 0.02% Proclin300 and 50% Glycerol.

Shipped at 4°C. Store at -20°C for one year. Avoid repeated freeze/thaw cycles.

Background: This gene encodes a NOD-like receptor family member. The encoded protein is a cytosolic regulator of innate immunity. This protein directly interacts with stimulator of interferon genes (STING), to prevent its proper trafficking, resulting in disruption of STING-dependent activation of the innate immune response. Alternative splicing results in multiple transcript variants. [provided by RefSeq, Feb 2014]

VALIDATION IMAGES



Sample: Lane 1: Human RAMOS cell lysates Lane 2: Human MCF-7 cell lysates Lane 3: Human SH-SY5Y cell lysates Lane 4: Human Jurkat cell lysates Primary: Anti-NLRC3 (bs-19282R) at 1/1000 dilution Secondary: IRDye800CW Goat Anti-Rabbit IgG at 1/20000 dilution Predicted band size: 115 kDa Observed band size: 120 kDa