

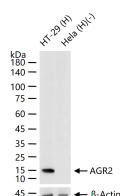
bsm-52594R**[Primary Antibody]****BioSS**
ANTIBODIES

www.bioss.com.cn

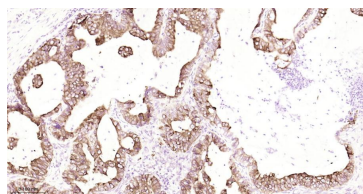
sales@bioss.com.cn

techsupport@bioss.com.cn

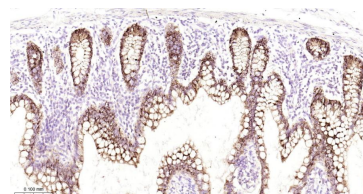
400-901-9800

AGR2 Recombinant Rabbit mAb**— DATASHEET —****Host:** Rabbit**Isotype:** IgG**Clonality:** Recombinant**CloneNo.:** 3F8**GeneID:** 10551**SWISS:** Q95994**Target:** AGR2**Immunogen:** A synthesized peptide derived from human AGR2: 1-64.**Purification:** affinity purified by Protein A**Concentration:** 1mg/ml**Storage:** 0.01M TBS (pH7.4) with 1% BSA, 0.02% Proclin300 and 50% Glycerol.
Shipped at 4°C. Store at -20°C for one year. Avoid repeated freeze/thaw cycles.**Background:** AGR2 is a member of the anterior gradient homolog family. It is the human ortholog of XAG-2, the secreted *Xenopus laevis* Anterior Gradient protein. In *X. laevis*, it is involved in cement gland differentiation and neural marker gene expression. AGR2 is a secretory protein encoded by two different AGR2 transcripts. It interacts with LYPD3 and ?dystroglycan (DAG-1). AGR2 is ubiquitously expressed with up-regulated expression in prostate cancer, breast cancer, lung cancer, renal carcinomas and endometrial carcinomas. AGR2 expression is positively correlated with that of the estrogen receptor (ER) and is negatively correlated with that of the epidermal growth factor receptor (EGFR). AGR2 may serve as a potential therapeutic marker for various cancers.**Applications:** **WB** (1:500-2000)**IHC-P** (1:100-500)**IHC-F** (1:100-500)**IF** (1:100-500)**Flow-Cyt** (1:20-100)**ICC/IF** (1:50-200)**Reactivity:** Human, Mouse, Rat**Predicted MW.:** 20 kDa**Subcellular Location:** Secreted ,Cytoplasm**— VALIDATION IMAGES —**

25 ug total protein per lane of various lysates (see on figure) probed with AGR2 monoclonal antibody, unconjugated (bsm-52594R) at 1:1000 dilution and 4°C overnight incubation. Followed by conjugated secondary antibody incubation at r.t. for 60 min.



Paraformaldehyde-fixed, paraffin embedded Human Lung Cancer; Antigen retrieval by boiling in sodium citrate buffer (pH6.0) for 15 min; Antibody incubation with AGR2 Monoclonal Antibody, Unconjugated(bsm-52594R) at 1:200 overnight at 4°C, followed by conjugation to the bs-0295G-HRP and DAB (C-0010) staining.



Paraformaldehyde-fixed, paraffin embedded Human Small Intestine; Antigen retrieval by boiling in sodium citrate buffer (pH6.0) for 15 min; Antibody incubation with AGR2 Monoclonal Antibody, Unconjugated(bsm-52594R) at 1:200 overnight at 4°C, followed by conjugation to the bs-0295G-HRP and DAB (C-0010) staining.