

bs-9935R**[Primary Antibody]****BioSS**
ANTIBODIES

www.bioss.com.cn

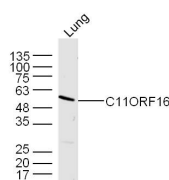
sales@bioss.com.cn

techsupport@bioss.com.cn

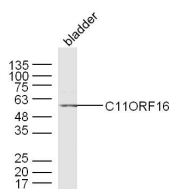
400-901-9800

C11ORF16 Rabbit pAb**— DATASHEET —**

Host: Rabbit Clonality: Polyclonal GeneID: 56673 Target: C11ORF16 Immunogen: KLH conjugated synthetic peptide derived from human C11ORF16: 151-250/467. Purification: affinity purified by Protein A Concentration: 1mg/ml Storage: 0.01M TBS (pH7.4) with 1% BSA, 0.02% Proclin300 and 50% Glycerol. Shipped at 4°C. Store at -20°C for one year. Avoid repeated freeze/thaw cycles. Background: C11orf16 is a 404 amino acid protein that is encoded by a gene located on human chromosome 11. With approximately 135 million base pairs and 1,400 genes, chromosome 11 makes up around 4% of human genomic DNA and is considered a gene and disease association dense chromosome. The chromosome 11 encoded Atm gene is important for regulation of cell cycle arrest and apoptosis following double strand DNA breaks. Atm mutation leads to the disorder known as ataxia-telangiectasia. The blood disorders Sickle cell anemia and β thalassemia are caused by HBB gene mutations. Wilms' tumors, WAGR syndrome and Denys-Drash syndrome are associated with mutations of the WT1 gene. Jervell and Lange-Nielsen syndrome, Jacobsen syndrome, Niemann-Pick disease, hereditary angioedema and Smith-Lemli-Opitz syndrome are also associated with defects in chromosome 11.	Isotype: IgG SWISS: Q9NQ32 Applications: WB (1:500-2000) Reactivity: Mouse (predicted: Human, Rat) Predicted MW.: 52 kDa Subcellular Location: Secreted ,Extracellular matrix ,Cytoplasm ,Nucleus
--	--

— VALIDATION IMAGES —

Sample: Lung (Mouse) Lysate at 40 ug Primary: Anti-C11ORF16 (bs-9935R) at 1/300 dilution
Secondary: IRDye800CW Goat Anti-Rabbit IgG at 1/20000 dilution Predicted band size: 52 kD
Observed band size: 52 kD



Sample: Bladder (Mouse) Lysate at 40 ug Primary: Anti-C11ORF16 (bs-9935R) at 1/300 dilution
Secondary: IRDye800CW Goat Anti-Rabbit IgG at 1/20000 dilution Predicted band size: 52 kD
Observed band size: 52 kD