

bs-21089R**[Primary Antibody]****RABIF Rabbit pAb****BioSS**
ANTIBODIES

www.bioss.com.cn

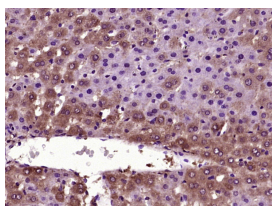
sales@bioss.com.cn

techsupport@bioss.com.cn

400-901-9800

— DATASHEET —

Host: Rabbit	Isotype: IgG	Applications: IHC-P (1:100-500)
Clonality: Polyclonal		IHC-F (1:100-500)
GeneID: 5877	SWISS: P47224	IF (1:100-500)
Target: RABIF		Reactivity: Rat (predicted: Human, Mouse, Rabbit, Pig)
Immunogen: KLH conjugated synthetic peptide derived from human RABIF: 51-123/123.		
Purification: affinity purified by Protein A		Predicted MW.: 14 kDa
Concentration: 1mg/ml		Subcellular Location: Cytoplasm
Storage: Preservative: 0.02% Proclin300, Constituents: 1% BSA, 0.01M PBS, pH7.4. Shipped at 4°C. Store at -20°C for one year. Avoid repeated freeze/thaw cycles.		
Background: This gene encodes a member of the SCE4/YPT1/RAB family of small GTP-binding proteins that are involved in the regulation of intracellular vesicular transport. This protein stimulates GTP-GDP exchange in SEC4, and to a lesser extent in YPT1 and RAB3A, and may play a general role in vesicular transport. [provided by RefSeq, Oct 2011]		

— VALIDATION IMAGES —

Paraformaldehyde-fixed, paraffin embedded (rat liver tissue); Antigen retrieval by boiling in sodium citrate buffer (pH6.0) for 15min; Block endogenous peroxidase by 3% hydrogen peroxide for 20 minutes; Blocking buffer (normal goat serum) at 37°C for 30min; Antibody incubation with (RABIF) Polyclonal Antibody, Unconjugated (bs-21089R) at 1:400 overnight at 4°C, followed by operating according to SP Kit(Rabbit) (sp-0023) instructions and DAB staining.

— SELECTED CITATIONS —

- **[IF=1.8]** Wang Yi-xiao. et al. CRISPR-Cas9 screening identified novel subtypes of cutaneous melanoma based on essential cancer genes. ARCH DERMATOL RES. 2025 Dec;317(1):1-18 IHC ;Human. 39644349