

bs-4033R**[Primary Antibody]****Bioss**
ANTIBODIES

www.bioss.com.cn

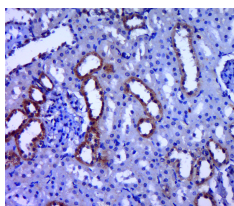
sales@bioss.com.cn

techsupport@bioss.com.cn

400-901-9800

PDHB Rabbit pAb**— DATASHEET —**

Host: Rabbit Clonality: Polyclonal GeneID: 5162 Target: PDHB Immunogen: KLH conjugated synthetic peptide derived from human PDHB: 51-150/359. Purification: affinity purified by Protein A Concentration: 1mg/ml Storage: 0.01M TBS (pH7.4) with 1% BSA, 0.02% Proclin300 and 50% Glycerol. Shipped at 4°C. Store at -20°C for one year. Avoid repeated freeze/thaw cycles. Background: The pyruvate dehydrogenase complex catalyzes the overall conversion of pyruvate to acetyl-CoA and CO ₂ . It contains multiple copies of three enzymatic components: pyruvate dehydrogenase (E1), dihydrolipoamide acetyltransferase (E2) and lipoamide dehydrogenase (E3).	Isotype: IgG SWISS: P11177	Applications: IHC-P (1:100-500) IHC-F (1:100-500) IF (1:100-500) Reactivity: Rat (predicted: Human, Mouse, Rabbit, Cow, Dog, Horse) Predicted MW.: 35 kDa Subcellular Location: Cytoplasm
---	---	--

— VALIDATION IMAGES —

Paraformaldehyde-fixed, paraffin embedded (rat kidney tissue); Antigen retrieval by boiling in sodium citrate buffer (pH6.0) for 15min; Block endogenous peroxidase by 3% hydrogen peroxide for 20 minutes; Blocking buffer (normal goat serum) at 37°C for 30min; Antibody incubation with (PDHB) Polyclonal Antibody, Unconjugated (bs-4033R) at 1:400 overnight at 4°C, followed by a conjugated secondary (sp-0023) for 20 minutes and DAB staining.

— SELECTED CITATIONS —

- **[IF=2.08]** Xing, Wen Min, et al. "Proteomic identification of mitochondrial targets involved in andrographolide sodium bisulfite-induced nephrotoxicity in a rat model." *Environmental Toxicology and Pharmacology* (2015). WB ;="Rat". 26356389