

bs-12230R

[Primary Antibody]

ZNF211 Rabbit pAb

BioSS
ANTIBODIES

www.bioss.com.cn

sales@bioss.com.cn

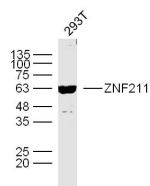
techsupport@bioss.com.cn

400-901-9800

— DATASHEET —

| | | |
|--|----------------------|--------------------------------------|
| Host: Rabbit | Isotype: IgG | Applications: WB (1:500-2000) |
| Clonality: Polyclonal | | Reactivity: Human |
| GeneID: 10520 | SWISS: Q13398 | |
| Target: ZNF211 | | |
| Immunogen: KLH conjugated synthetic peptide derived from Human ZNF211: 51-160/564. | | Predicted MW.: 64 kDa |
| Purification: affinity purified by Protein A | | Subcellular Location: Nucleus |
| Concentration: 1mg/ml | | |
| Storage: 0.01M TBS (pH7.4) with 1% BSA, 0.02% Proclin300 and 50% Glycerol. Shipped at 4°C. Store at -20°C for one year. Avoid repeated freeze/thaw cycles. | | |
| Background: May be involved in transcriptional regulation. | | |

— VALIDATION IMAGES —



Sample: 293T Cell (Human) Lysate at 40 ug
Primary: Anti-ZNF211 (bs-12230R) at 1/300
dilution Secondary: IRDye800CW Goat Anti-
Rabbit IgG at 1/20000 dilution Predicted band
size: 64 kD Observed band size: 64 kD