

**bs-3861R****[ Primary Antibody ]****LPP Rabbit pAb****BioSS**  
**ANTIBODIES**

www.bioss.com.cn

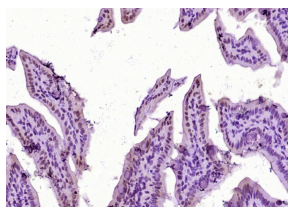
sales@bioss.com.cn

techsupport@bioss.com.cn

400-901-9800

**— DATASHEET —**

<b>Host:</b> Rabbit <b>Clonality:</b> Polyclonal <b>GeneID:</b> 4026 <b>Target:</b> LPP <b>Immunogen:</b> KLH conjugated synthetic peptide derived from human LIM protein: 411-510/612. <b>Purification:</b> affinity purified by Protein A <b>Concentration:</b> 1mg/ml <b>Storage:</b> 0.01M TBS (pH7.4) with 1% BSA, 0.02% Proclin300 and 50% Glycerol. Shipped at 4°C. Store at -20°C for one year. Avoid repeated freeze/thaw cycles. <b>Background:</b> LPP (LIM containing lipoma preferred partner), is a scaffolding protein which contains three LIM domains at its carboxy terminus, preceded by a proline rich pre LIM region containing a number of protein interaction domains. LPP localizes to sites of cell adhesion, such as focal adhesions and cell-cell contacts and may be involved in cell-cell adhesion and cell motility. LPP also shuttles through the nucleus and may function as a transcriptional co-activator. The human LPP gene maps to chromosomal location 3q28, and preferentially translocates to the HMGIC gene in a subclass of human benign mesenchymal tumors known as lipomas. Alternate splicing results in multiple transcript variants.	<b>Isotype:</b> IgG <b>SWISS:</b> Q93052 <b>Applications:</b> IHC-P (1:100-500) IHC-F (1:100-500) IF (1:100-500) <b>Reactivity:</b> Mouse (predicted: Human, Rat, Rabbit, Cow, Chicken, Dog, Horse) <b>Predicted MW.:</b> 80 kDa <b>Subcellular Location:</b> Cytoplasm ,Nucleus
--	---

**— VALIDATION IMAGES —**

Paraformaldehyde-fixed, paraffin embedded (mouse intestine tissue); Antigen retrieval by boiling in sodium citrate buffer (pH6.0) for 15min; Block endogenous peroxidase by 3% hydrogen peroxide for 20 minutes; Blocking buffer (normal goat serum) at 37°C for 30min; Antibody incubation with (LIM protein) Polyclonal Antibody, Unconjugated (bs-3861R) at 1:400 overnight at 4°C, followed by operating according to SP Kit(Rabbit) (sp-0023) instructions and DAB staining.