

## CRELD2 Rabbit pAb

Catalog Number: bs-8185R

Target Protein: CRELD2

Concentration: 1mg/ml

Form: Liquid

Host: Rabbit

Clonality: Polyclonal

Isotype: IgG

Applications: WB (1:500-2000)

Reactivity: Mouse (predicted:Human, Rat, Pig, Sheep, Cow, Chicken, Dog, Horse)

Predicted MW: 36 kDa

Entrez Gene: 79174

Swiss Prot: Q6UXH1

Source: KLH conjugated synthetic peptide derived from human CRELD2: 31-130/353.

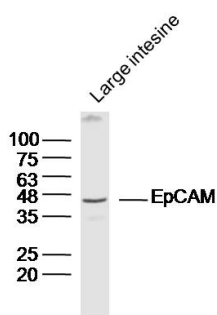
Purification: affinity purified by Protein A

Storage: 0.01M TBS (pH7.4) with 1% BSA, 0.02% Proclin300 and 50% Glycerol.

Shipped at 4°C. Store at -20°C for one year. Avoid repeated freeze/thaw cycles.

Background: May regulate transport of alpha4-beta2 neuronal acetylcholine receptor.

### VALIDATION IMAGES



Sample: large intestine(mouse) lysate at 30ug; Primary: Anti-EpCAM (bs-8185R) at 1/300 dilution Secondary: IRDye800CW Goat Anti-Rabbit IgG at 1/20000 dilution Predicted band size: 36 kD Observed band size: 43kD