

**BH0006****[ Primary Antibody ]****BioSS**  
ANTIBODIES

www.bioss.com.cn

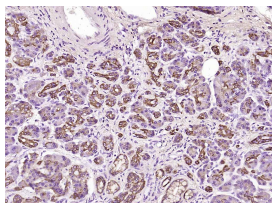
sales@bioss.com.cn

techsupport@bioss.com.cn

400-901-9800

**CK18(ready to use) Mouse mAb****— DATASHEET —**

<b>Host:</b> Mouse	<b>Isotype:</b> IgG	<b>Applications:</b> IHC-P IHC-F IF  <b>Reactivity:</b> Human   <b>Predicted MW.:</b> 48 kDa  <b>Subcellular Location:</b> Cytoplasm ,Nucleus
<b>Clonality:</b> Monoclonal	<b>CloneNo.:</b> 10H2	
<b>GeneID:</b> 3875	<b>SWISS:</b> P05783	
<b>Target:</b> CK18(ready to use)		
<b>Purification:</b> affinity purified by Protein A		
<b>Storage:</b> 0.01M PBS (pH7.4) with 1% BSA and 0.02% Proclin300. Store at 2-8°C for one year. Avoid repeated freeze/thaw cycles.		
<b>Background:</b> KRT18 encodes the type I intermediate filament chain keratin 18. Keratin 18, together with its filament partner keratin 8, are perhaps the most commonly found members of the intermediate filament gene family. They are expressed in single layer epithelial tissues of the body. Mutations in this gene have been linked to cryptogenic cirrhosis. Two transcript variants encoding the same protein have been found for this gene. [provided by RefSeq, Jul 2008]		

**— VALIDATION IMAGES —**

Paraformaldehyde-fixed, paraffin embedded (human pancreatic carcinoma); Antigen retrieval by boiling in sodium citrate buffer (pH6.0) for 15min; Block endogenous peroxidase by 3% hydrogen peroxide for 20 minutes; Blocking buffer (normal goat serum) at 37°C for 30min; Antibody incubation with (CK18) Polyclonal Antibody, Unconjugated (BH0006) overnight at 4°C, followed by operating according to SP Kit(Mouse)(sp-0024) instructions and DAB staining.