

bsm-52361R**[Primary Antibody]**

Bioss
ANTIBODIES

www.bioss.com.cn

sales@bioss.com.cn

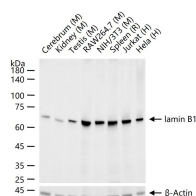
techsupport@bioss.com.cn

400-901-9800

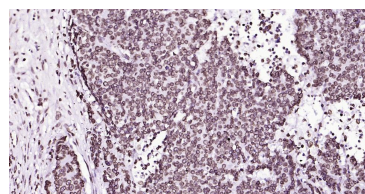
lamin B1 Recombinant Rabbit mAb**DATASHEET****Host:** Rabbit**Clonality:** Recombinant**GeneID:** 4001**Target:** lamin B1**Purification:** affinity purified by Protein A**Concentration:** 1mg/ml**Storage:** 0.01M TBS (pH7.4) with 1% BSA, 0.02% Proclin300 and 50% Glycerol.

Store at -20°C for one year. Avoid repeated freeze/thaw cycles. The lyophilized antibody is stable at room temperature for at least one month and for greater than a year when kept at -20°C. When reconstituted in sterile pH 7.4 0.01M PBS or diluent of antibody the antibody is stable for at least two weeks at 2-4°C.

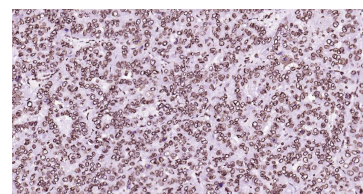
Background: The nuclear lamina consists of a two-dimensional matrix of proteins located next to the inner nuclear membrane. The lamin family of proteins make up the matrix and are highly conserved in evolution. During mitosis, the lamina matrix is reversibly disassembled as the lamin proteins are phosphorylated. Lamin proteins are thought to be involved in nuclear stability, chromatin structure and gene expression. Vertebrate lamins consist of two types, A and B. This gene encodes one of the two B type proteins, B1. Alternative splicing results in transcript variants and a duplication of this gene is associated with autosomal dominant adult-onset leukodystrophy (ADLD). [provided by RefSeq, Oct 2010].

Isotype: IgG**CloneNo.:** 4A3**SWISS:** P20700**Applications:** WB (1:2000-10000)**IHC-P** (1:200-800)**IHC-F** (1:200-800)**IF** (1:200-800)**Flow-Cyt** (1ug/Test)**ICC/IF** (1:100-500)**Reactivity:** Human, Mouse, Rat**Predicted MW.:** 70 kDa**Subcellular Location:** Nucleus**VALIDATION IMAGES**

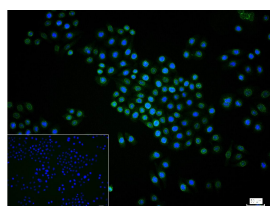
25 ug total protein per lane of various lysates (see on figure) probed with lamin B1 monoclonal antibody, unconjugated (bsm-52361R) at 1:10000 dilution and 4°C overnight incubation. Followed by conjugated secondary antibody incubation at r.t. for 60 min.



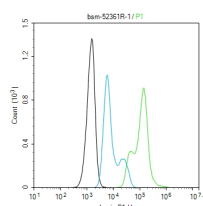
Paraformaldehyde-fixed, paraffin embedded Human Esophagus Cancer; Antigen retrieval by boiling in sodium citrate buffer (pH6.0) for 15 min; Antibody incubation with lamin B1 Monoclonal Antibody, Unconjugated (bsm-52361R) at 1:200 overnight at 4°C, followed by conjugation to the bs-0295G-HRP and DAB (C-0010) staining



Paraformaldehyde-fixed, paraffin embedded Human Liver Cancer; Antigen retrieval by boiling in sodium citrate buffer (pH6.0) for 15 min; Antibody incubation with lamin B1 Monoclonal Antibody, Unconjugated (bsm-52361R) at 1:200 overnight at 4°C, followed by conjugation to the bs-0295G-HRP and DAB (C-0010) staining.



4% Paraformaldehyde-fixed HeLa (H) cell; Triton X-100 at r.t. for 20 min; Antibody incubation with (lamin B1) monoclonal Antibody, unconjugated (bsm-52361R) 1:100, 90 min at 37°C; followed by conjugated Goat Anti-Rabbit IgG antibody



The HeLa (H) cells were fixed with 4% PFA (10 min at r.t.) and then permeabilized with 90% ice-cold methanol for 20 min at -20°C, the cells then were incubated in 5% BSA to block non-specific protein-protein interactions (30 min at

Important Note: This product as supplied is intended for research use only, not for use in human, therapeutic or diagnostic applications.

(green, bs-60295G-BF488) at 37°C for 90 min, DAPI (blue, C02-04002) was used to stain the cell nuclei. PBS instead of the primary antibody was used as the blank control.

r.t.).Primary Antibody (green):Rabbit Anti-lamin B1 antibody (bsm-52361R): 1 µg/10⁶ cells;
Secondary Antibody (white blue): Goat anti-Rabbit IgG-BF488 (bs-60295G-BF488): 1 µg/test.
Blank control (black): PBS. Acquisition of 20,000 events was performed.

— SELECTED CITATIONS —

- **[IF=3.1]** Li Chen. et al. Gandouling alleviates nerve injury through PI3K/Akt/FoxO1 and Sirt1/FoxO1 signaling pathway to inhibit autophagy in the rats model of Wilson's disease. BRAIN BEHAV. 2023 Nov;;e3325 WB ;Rat. 38010098