

**bs-16423R**

**[ Primary Antibody ]**

## ZNF862 Rabbit pAb

**Bioss**  
ANTIBODIES

www.bioss.com.cn

sales@bioss.com.cn

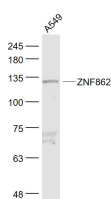
techsupport@bioss.com.cn

400-901-9800

### — DATASHEET —

<b>Host:</b> Rabbit	<b>Isotype:</b> IgG	<b>Applications:</b> WB (1:500-2000)
<b>Clonality:</b> Polyclonal		<b>Reactivity:</b> Human (predicted: Mouse, Rat, Pig, Cow, Chicken, Dog, Horse)
<b>GeneID:</b> 643641	<b>SWISS:</b> O60290	
<b>Target:</b> ZNF862		<b>Predicted MW.:</b> 132 kDa
<b>Immunogen:</b> KLH conjugated synthetic peptide derived from human ZNF862: 131-230/1169.		<b>Subcellular Location:</b> Nucleus
<b>Purification:</b> affinity purified by Protein A		
<b>Concentration:</b> 1mg/ml		
<b>Storage:</b> 0.01M TBS (pH7.4) with 1% BSA, 0.02% Proclin300 and 50% Glycerol. Shipped at 4°C. Store at -20°C for one year. Avoid repeated freeze/thaw cycles.		
<b>Background:</b> The exact function of ZNF862 remains unknown; it may be involved in transcriptional regulation.		

### — VALIDATION IMAGES —



Sample: A549(Human) Cell Lysate at 30 ug  
Primary: Anti- ZNF862 (bs-16423R) at 1/300 dilution  
Secondary: IRDye800CW Goat Anti-Rabbit IgG at 1/20000 dilution  
Predicted band size: 132 kD  
Observed band size: 132 kD