

bs-13584R

[Primary Antibody]

ZBTB8A Rabbit pAb

Bioss
ANTIBODIES

www.bioss.com.cn

sales@bioss.com.cn

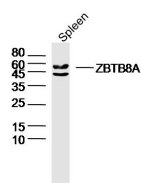
techsupport@bioss.com.cn

400-901-9800

— DATASHEET —

Host: Rabbit	Isotype: IgG	Applications: WB (1:500-2000)
Clonality: Polyclonal		Reactivity: Mouse (predicted: Human, Rat, Rabbit, Pig, Sheep, Cow, Chicken, Dog, Horse)
GeneID: 653121	SWISS: Q96BR9	
Target: ZBTB8A		Predicted MW.: 50 kDa
Immunogen: KLH conjugated synthetic peptide derived from human ZBTB8A: 101-200/441.		Subcellular Location: Nucleus
Purification: affinity purified by Protein A		
Concentration: 1mg/ml		
Storage: 0.01M TBS (pH7.4) with 1% BSA, 0.02% Proclin300 and 50% Glycerol. Shipped at 4°C. Store at -20°C for one year. Avoid repeated freeze/thaw cycles.		

— VALIDATION IMAGES —



Sample: Spleen (Mouse) Lysate at 40 ug Primary:
Anti-ZBTB8A (bs-13584R) at 1/300 dilution
Secondary: IRDye800CW Goat Anti-Rabbit IgG at
1/20000 dilution Predicted band size: 50 kD
Observed band size: 50 kD