

bs-19276R

[Primary Antibody]

NKX2.8 Rabbit pAb

BioSS
ANTIBODIES

www.bioss.com.cn

sales@bioss.com.cn

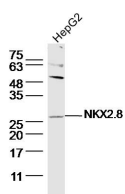
techsupport@bioss.com.cn

400-901-9800

— DATASHEET —

| | | |
|--|----------------------|--------------------------------------|
| Host: Rabbit | Isotype: IgG | Applications: WB (1:500-2000) |
| Clonality: Polyclonal | | Reactivity: Human |
| GeneID: 26257 | SWISS: O15522 | |
| Target: NKX2.8 | | |
| Immunogen: KLH conjugated synthetic peptide derived from human NKX2.8: 1-100/239. | | Predicted MW.: 26 kDa |
| Purification: affinity purified by Protein A | | Subcellular Location: Nucleus |
| Concentration: 1mg/ml | | |
| Storage: 0.01M TBS (pH7.4) with 1% BSA, 0.02% Proclin300 and 50% Glycerol. Shipped at 4°C. Store at -20°C for one year. Avoid repeated freeze/thaw cycles. | | |

— VALIDATION IMAGES —



Sample: HepG2 Cell Lysate at 40 ug Primary:

Anti-NKX2.8 (bs-19276R) at 1/300 dilution

Secondary: IRDye800CW Goat Anti-Rabbit IgG at

1/20000 dilution Predicted band size: 26 kD

Observed band size: 26 kD