

ZIK1 Rabbit pAb

Catalog Number: bs-19266R

Target Protein: ZIK1

Concentration: 1mg/ml

Form: Liquid

Host: Rabbit

Clonality: Polyclonal

Isotype: IgG

Applications: WB (1:500-2000)

Reactivity: Mouse (predicted:Human, Rat)

Predicted MW: 55 kDa

Subcellular Nucleus

Locations:

Entrez Gene: 284307

Swiss Prot: Q3SY52

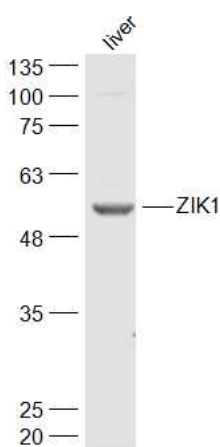
Source: KLH conjugated synthetic peptide derived from human ZIK1: 251-350/487.

Purification: affinity purified by Protein A

Storage: 0.01M TBS (pH7.4) with 1% BSA, 0.02% Proclin300 and 50% Glycerol.

Shipped at 4°C. Store at -20°C for one year. Avoid repeated freeze/thaw cycles.

VALIDATION IMAGES



Sample: Liver(Mouse) Cell Lysate at 40 ug Primary: Anti-ZIK1 (bs-19266R) at 1/300 dilution Secondary: IRDye800CW Goat Anti-Rabbit IgG at 1/20000 dilution Predicted band size: 55 kD Observed band size: 55 kD