

bs-17064R**[Primary Antibody]****Bioss**
ANTIBODIES

www.bioss.com.cn

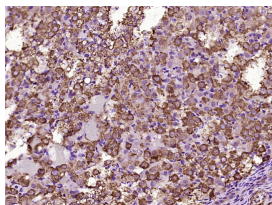
sales@bioss.com.cn

techsupport@bioss.com.cn

400-901-9800

Kinectin 1 Rabbit pAb**— DATASHEET —**

Host: Rabbit	Isotype: IgG	Applications: IHC-P (1:100-500)
Clonality: Polyclonal		IHC-F (1:100-500)
GeneID: 3895	SWISS: Q86UP2	IF (1:100-500)
Target: Kinectin 1		Reactivity: Rat (predicted: Human, Mouse, Rabbit, Pig, Cow, Chicken, Dog, Horse)
Immunogen: KLH conjugated synthetic peptide derived from human Kinectin 1: 1201-1300/1357.		
Purification: affinity purified by Protein A		Predicted MW.: 156 kDa
Concentration: 1mg/ml		Subcellular Location: Cytoplasm
Storage: 0.01M TBS (pH7.4) with 1% BSA, 0.02% Proclin300 and 50% Glycerol. Shipped at 4°C. Store at -20°C for one year. Avoid repeated freeze/thaw cycles.		
Background: This gene encodes an integral membrane protein that is a member of the kinectin protein family. The encoded protein is primarily localized to the endoplasmic reticulum membrane. This protein binds kinesin and may be involved in intracellular organelle motility. This protein also binds translation elongation factor-delta and may be involved in the assembly of the elongation factor-1 complex. Alternate splicing results in multiple transcript variants of this gene. [provided by RefSeq, Aug 2012]		

— VALIDATION IMAGES —

Paraformaldehyde-fixed, paraffin embedded (Rat ovarian); Antigen retrieval by boiling in sodium citrate buffer (pH6.0) for 15min; Block endogenous peroxidase by 3% hydrogen peroxide for 20 minutes; Blocking buffer (normal goat serum) at 37°C for 30min; Antibody incubation with (Kinectin 1) Polyclonal Antibody, Unconjugated (bs-17064R) at 1:400 overnight at 4°C, followed by operating according to SP Kit(Rabbit) (sp-0023) instructions and DAB staining.