

bs-12084R**[Primary Antibody]****GABRR1 Rabbit pAb****BioSS**
ANTIBODIES

www.bioss.com.cn

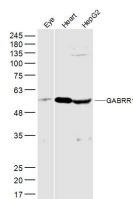
sales@bioss.com.cn

techsupport@bioss.com.cn

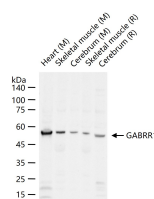
400-901-9800

— DATASHEET —

Host: Rabbit Clonality: Polyclonal GeneID: 2569 Target: GABRR1 Immunogen: KLH conjugated synthetic peptide derived from human GABRR1: 201-300/479. < Extracellular > Purification: affinity purified by Protein A Concentration: 1mg/ml Storage: 0.01M TBS (pH7.4) with 1% BSA, 0.02% Proclin300 and 50% Glycerol. Shipped at 4°C. Store at -20°C for one year. Avoid repeated freeze/thaw cycles. Background: GABA is the major inhibitory neurotransmitter in the mammalian brain where it acts at GABA receptors, which are ligand-gated chloride channels. GABRR1 is a member of the rho subunit family. Several transcript variants encoding different isoforms have been found for this gene. [provided by RefSeq, Feb 2012]	Isotype: IgG SWISS: P24046	Applications: WB (1:500-2000) Reactivity: Human, Mouse, Rat (predicted: Rabbit, Pig, Cow, Dog) Predicted MW.: 53 kDa Subcellular Location: Cell membrane
--	---	--

— VALIDATION IMAGES —

Sample: Eye (Mouse) Lysate at 40 ug Heart (Mouse) Lysate at 40 ug HepG2 (Human) Lysate at 30 ug
 Primary: Anti-GABRR1 (bs-12084R) at 1/300 dilution Secondary: IRDye800CW Goat Anti-Rabbit IgG at 1/20000 dilution Predicted band size: 53 kD Observed band size: 53 kD



25 ug total protein per lane of various lysates (see on figure) probed with GABRR1 polyclonal antibody, unconjugated (bs-12084R) at 1:1000 dilution and 4°C overnight incubation. Followed by conjugated secondary antibody incubation at r.t. for 60 min.

— SELECTED CITATIONS —

- **[IF=2.47]** Kosonsiriluk, Sunantha, et al. "Enhanced GABAergic inhibition in the premammillary nucleus of photorefractory turkey hens via GABA A receptor upregulation." General and Comparative Endocrinology (2016). IHC ;="". 27055929