

bs-4901R**[Primary Antibody]****Annexin A7 Rabbit pAb****Bioss**
ANTIBODIES

www.bioss.com.cn

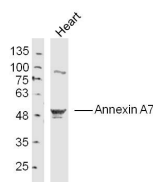
sales@bioss.com.cn

techsupport@bioss.com.cn

400-901-9800

— DATASHEET —

| | | |
|---|----------------------|---|
| Host: Rabbit | Isotype: IgG | Applications: WB (1:500-2000) |
| Clonality: Polyclonal | | Reactivity: Mouse (predicted: Human, Rat, Rabbit, Pig, Cow, Dog) |
| GeneID: 310 | SWISS: P20073 | |
| Target: Annexin A7 | | Predicted MW.: 54 kDa |
| Immunogen: KLH conjugated synthetic peptide derived from human Annexin A7: 251-350/488. | | Subcellular Location: Cytoplasm ,Nucleus |
| Purification: affinity purified by Protein A | | |
| Concentration: 1mg/ml | | |
| Storage: 0.01M TBS (pH7.4) with 1% BSA, 0.02% Proclin300 and 50% Glycerol. Shipped at 4°C. Store at -20°C for one year. Avoid repeated freeze/thaw cycles. | | |
| Background: The Annexins are a family of structurally similar proteins. Annexins bind to phospholipids and may be involved in regulation of membrane transport, membrane channel activity, and interaction of the cell membrane with the extracellular matrix. Annexin A7 is a member of the annexin family of calcium dependent phospholipid binding proteins. The Annexin A7 gene contains 14 exons and spans approximately 34 kb of DNA. Structural analysis of the protein suggests that Annexin A7 is a membrane binding protein with diverse properties including voltage sensitive calcium channel activity, ion selectivity and membrane fusion. | | |

— VALIDATION IMAGES —

Sample: Heart (Mouse) Lysate at 40 ug Primary:

Anti- Annexin A7 (bs-4901R) at 1/300 dilution

Secondary: IRDye800CW Goat Anti-Rabbit IgG at

1/20000 dilution Predicted band size: 54 kD

Observed band size: 54 kD