

bs-10183R**[Primary Antibody]****CMKLR1 Rabbit pAb****Bioss**
ANTIBODIES

www.bioss.com.cn

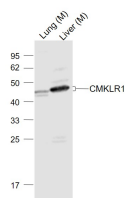
sales@bioss.com.cn

techsupport@bioss.com.cn

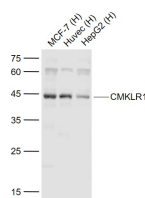
400-901-9800

— DATASHEET —

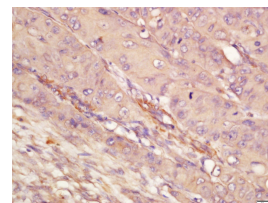
Host: Rabbit	Isotype: IgG	Applications: WB (1:500-2000) IHC-P (1:100-500) IHC-F (1:100-500) IF (1:100-500) Reactivity: Human, Mouse (predicted: Sheep, Dog) Predicted MW.: 42 kDa Subcellular Location: Cell membrane
Clonality: Polyclonal		
GeneID: 1240	SWISS: Q99788	
Target: CMKLR1		
Immunogen: KLH conjugated synthetic peptide derived from human CMKLR1: 171-280/373. < Extracellular >		
Purification: affinity purified by Protein A		
Concentration: 1mg/ml		
Storage: 0.01M TBS (pH7.4) with 1% BSA, 0.02% Proclin300 and 50% Glycerol. Shipped at 4°C. Store at -20°C for one year. Avoid repeated freeze/thaw cycles.		
Background: Chemokine-Like Receptor 1 (CMKLR1) is a serpentine transmembrane G-protein linked receptor. It is an orphan chemoattractant receptor, also known as ChemR23 or DEZ. CMKLR1 is expressed on the surface of monocyte-derived immature dendritic cells and peripheral plamacytoid dendritic (pDC) cells; but not on myeloid dendritic (mDC) cells, monocytes and lymphocytes. The expression of CMKLR1 on pDC is down-regulated after activation. Chemerin (TIG2) is a natural ligand of CMKLR1. The interaction of CMKLR1 with Chemerin induces pDC activation and chemotaxis. It has been shown that CMKLR1 is a coreceptor for several strains of SIV and HIV-1. CMKLR1 is a potential useful marker for distinguishing pDCs and mDCs.		

— VALIDATION IMAGES —

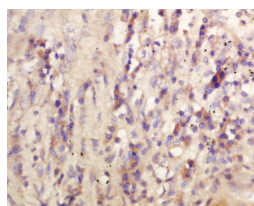
Sample: Lane 1: Lung (Mouse) Lysate at 40 ug
Lane 2: Liver (Mouse) Lysate at 40 ug
Primary: Anti-CMKLR1 (bs-10183R) at 1/1000 dilution
Secondary: IRDye800CW Goat Anti-Rabbit IgG at 1/20000 dilution
Predicted band size: 42 kD
Observed band size: 42 kD



Sample: Lane 1: MCF-7 (Human) Cell Lysate at 30 ug
Lane 2: Huvec (Human) Cell Lysate at 30 ug
Lane 3: HepG2 (Human) Cell Lysate at 30 ug
Primary: Anti-CMKLR1 (bs-10183R) at 1/1000 dilution
Secondary: IRDye800CW Goat Anti-Rabbit IgG at 1/20000 dilution
Predicted band size: 42 kD
Observed band size: 44 kD



Tissue/cell: Human laryngeal tissue; 4% Paraformaldehyde-fixed and paraffin-embedded; Antigen retrieval: citrate buffer (0.01M, pH 6.0), Boiling bathing for 15min; Block endogenous peroxidase by 3% Hydrogen peroxide for 30min; Blocking buffer (normal goat serum, C-0005) at 37°C for 20 min; Incubation: Anti-CMKLR1 Polyclonal Antibody, Unconjugated(bs-10183R) 1:200, overnight at 4°C, followed by conjugation to the secondary antibody(SP-0023) and DAB(C-0010) staining



Tissue/cell: human lung carcinoma; 4% Paraformaldehyde-fixed and paraffin-

Important Note: This product as supplied is intended for research use only, not for use in human, therapeutic or diagnostic applications.

embedded; Antigen retrieval: citrate buffer (0.01M, pH 6.0), Boiling bathing for 15min; Block endogenous peroxidase by 3% Hydrogen peroxide for 30min; Blocking buffer (normal goat serum, C-0005) at 37°C for 20 min; Incubation: Anti-CMKLR1 Polyclonal Antibody, Unconjugated(bs-10183R) 1:200, overnight at 4°C, followed by conjugation to the secondary antibody(SP-0023) and DAB(C-0010) staining

— SELECTED CITATIONS —

- **[IF=3.742]** Ye Y et al. Chemerin/ChemR23 regulates cementoblast function and tooth resorption in mice via inflammatory factors J Periodontol. 2020 Dec 1. Other ;. 33289084
- **[IF=3.367]** Aliénor Hanthaziet al. Chemerin Added to Endothelin-1 Promotes Rat Pulmonary Artery Smooth Muscle Cell Proliferation and Migration. Front Physiol . 2020 Jul 30;11:926. IF ;rat. 32848866