

bs-10151R**[Primary Antibody]****Bioss**
ANTIBODIES

www.bioss.com.cn

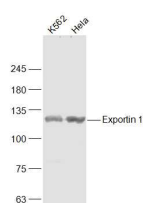
sales@bioss.com.cn

techsupport@bioss.com.cn

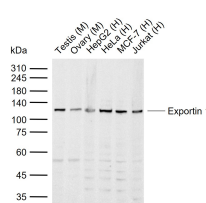
400-901-9800

Exportin 1 Rabbit pAb**— DATASHEET —**

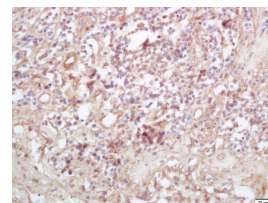
Host: Rabbit	Isotype: IgG	Applications: WB (1:500-2000) IHC-P (1:100-500) IHC-F (1:100-500) IF (1:100-500)
Clonality: Polyclonal		
GeneID: 7514	SWISS: O14980	
Target: Exportin 1		
Immunogen: KLH conjugated synthetic peptide derived from human Exportin 1/CRM1: 701-800/1071.		Reactivity: Human, Mouse, Rat (predicted: Rabbit, Pig, Sheep, Cow, Chicken, Dog, Horse)
Purification: affinity purified by Protein A		
Concentration: 1mg/ml		Predicted MW.: 118 kDa
Storage: 0.01M TBS (pH7.4) with 1% BSA, 0.02% Proclin300 and 50% Glycerol. Shipped at 4°C. Store at -20°C for one year. Avoid repeated freeze/thaw cycles.		Subcellular Location: Cytoplasm ,Nucleus
Background: The protein encoded by this gene mediates leucine-rich nuclear export signal (NES)-dependent protein transport. Exportin 1 specifically inhibits the nuclear export of Rev and U snRNAs. It is involved in the control of several cellular processes by controlling the localization of cyclin B, MPAK, and MAPKAP kinase 2. This protein also regulates NFAT and AP-1. [provided by RefSeq, Jul 2008]		

— VALIDATION IMAGES —

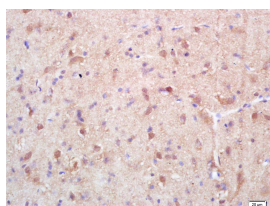
Sample: K562(Human) Cell Lysate at 30 ug
 HeLa(Human) Cell Lysate at 30 ug
 Primary: Anti-Exportin 1 (bs-10151R) at 1/1000 dilution
 Secondary: IRDye800CW Goat Anti-Rabbit IgG at 1/20000 dilution
 Predicted band size: 118 kD
 Observed band size: 123 kD



Sample: Lane 1: Mouse Testis tissue lysates
 Lane 2: Mouse Ovary tissue lysates
 Lane 3: Human HepG2 cell lysates
 Lane 4: Human HeLa cell lysates
 Lane 5: Human MCF-7 cell lysates
 Lane 6: Human Jurkat cell lysates
 Primary: Anti-Exportin 1 (bs-10151R) at 1/1000 dilution
 Secondary: IRDye800CW Goat Anti-Rabbit IgG at 1/20000 dilution
 Predicted band size: 118 kDa
 Observed band size: 120 kDa



Tissue/cell: human lung carcinoma; 4% Paraformaldehyde-fixed and paraffin-embedded; Antigen retrieval: citrate buffer (0.01M, pH 6.0), Boiling bathing for 15min; Block endogenous peroxidase by 3% Hydrogen peroxide for 30min; Blocking buffer (normal goat serum, C-0005) at 37°C for 20 min; Incubation: Anti-Exportin 1/CRM1 Polyclonal Antibody, Unconjugated(bs-10151R) 1:200, overnight at 4°C, followed by conjugation to the secondary antibody(SP-0023) and DAB(C-0010) staining



Tissue/cell: rat brain tissue; 4% Paraformaldehyde-fixed and paraffin-embedded; Antigen retrieval: citrate buffer (0.01M, pH 6.0), Boiling bathing for 15min; Block endogenous peroxidase by 3% Hydrogen peroxide for 30min; Blocking buffer (normal goat serum, C-0005) at 37°C for 20 min; Incubation:

Important Note: This product as supplied is intended for research use only, not for use in human, therapeutic or diagnostic applications.

Anti-Exportin 1/CRM1 Polyclonal Antibody,
Unconjugated(bs-10151R) 1:200, overnight at
4°C, followed by conjugation to the secondary
antibody(SP-0023) and DAB(C-0010) staining