

bs-3545R**[Primary Antibody]****RCC1 Rabbit pAb****Bioss**
ANTIBODIES

www.bioss.com.cn

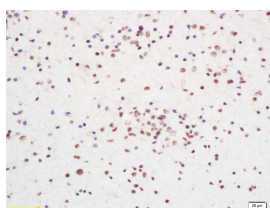
sales@bioss.com.cn

techsupport@bioss.com.cn

400-901-9800

— DATASHEET —

Host: Rabbit	Isotype: IgG	Applications: IHC-P (1:100-500) IHC-F (1:100-500) IF (1:100-500) Reactivity: Human (predicted: Mouse, Rat, Pig, Cow) Predicted MW.: 46 kDa Subcellular Location: Cytoplasm ,Nucleus
Clonality: Polyclonal		
GeneID: 1104	SWISS: P18754	
Target: RCC1		
Immunogen: KLH conjugated synthetic peptide derived from human RCC1: 11-120/421.		
Purification: affinity purified by Protein A		
Concentration: 1mg/ml		
Storage: 0.01M TBS (pH7.4) with 1% BSA, 0.02% Proclin300 and 50% Glycerol. Shipped at 4°C. Store at -20°C for one year. Avoid repeated freeze/thaw cycles.		
Background: Ran GTPase plays important roles in nucleocytoplasmic transport in interphase and in both spindle formation and nuclear envelope (NE) assembly during mitosis. The latter functions rely on the presence of high local concentrations of GTP bound Ran near mitotic chromatin. RanGTP localization has been proposed to result from the association of Ran's GDP/GTP exchange factor, RCC1, with chromatin , but Ran is shown here to bind directly to chromatin in two modes, either dependent or independent of RCC1, and, where bound, to increase the affinity of chromatin for NE membranes.		

— VALIDATION IMAGES —

Tissue/cell: human glioma carcinoma; 4% Paraformaldehyde-fixed and paraffin-embedded; Antigen retrieval: citrate buffer (0.01M, pH 6.0), Boiling bathing for 15min; Block endogenous peroxidase by 3% Hydrogen peroxide for 30min; Blocking buffer (normal goat serum,C-0005) at 37°C for 20 min; Incubation: Anti-RCC1 Polyclonal Antibody, Unconjugated(bs-3545R) 1:200, overnight at 4°C, followed by conjugation to the secondary antibody(SP-0023) and DAB(C-0010) staining