

**bs-4872R****[ Primary Antibody ]****Complement C3 Rabbit pAb****Bioss**  
**ANTIBODIES**

www.bioss.com.cn

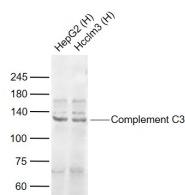
sales@bioss.com.cn

techsupport@bioss.com.cn

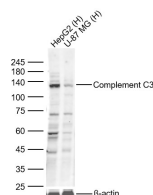
400-901-9800

**— DATASHEET —**

<b>Host:</b> Rabbit <b>Clonality:</b> Polyclonal <b>GeneID:</b> 718 <b>Target:</b> Complement C3 <b>Immunogen:</b> KLH conjugated synthetic peptide derived from human Complement C3 C3a anaphylatoxin: 672-720/1663. <b>Purification:</b> affinity purified by Protein A <b>Concentration:</b> 1mg/ml <b>Storage:</b> 0.01M TBS (pH7.4) with 1% BSA, 0.02% Proclin300 and 50% Glycerol. Shipped at 4°C. Store at -20°C for one year. Avoid repeated freeze/thaw cycles. <b>Background:</b> The complement factor C3 consists of an alpha and a beta chain. C3 is a central factor in the complement cascade. It is central to the alternative pathway that leads to the C3 convertase C3bBb. The classical mannose binding lectin activation pathway leads to the C3 convertase C4b2a. These convertases cleave C3 resulting in C3a and C3b. Further degradation leads to the formation of the alpha chain products C3d, C3g and C3c. C3 is an acute phase protein that is produced by a wide range of tissues, including renal epithelial cells and hepatocytes.	<b>Isotype:</b> IgG <b>SWISS:</b> P01024 <b>Applications:</b> WB (1:500-2000)  <b>Reactivity:</b> Human  <b>Predicted MW.:</b> 8.5/181 kDa  <b>Subcellular Location:</b> Secreted
---	---

**— VALIDATION IMAGES —**

Sample: Lane 1: Human HepG2 cell lysates Lane 2: Human Hcclm3 cell lysates Primary: Anti-Complement C3 (bs-4872R) at 1/1000 dilution Secondary: IRDye800CW Goat Anti-Rabbit IgG at 1/20000 dilution Predicted band size: 8.5/181 kD Observed band size: 120 kD



Sample: Lane 1: Human HepG2 cell Lysates Lane 2: Human U-87 MG cell Lysates Primary: Anti-Complement C3 (bs-4872R) at 1/1000 dilution Secondary: IRDye800CW Goat Anti-Rabbit IgG at 1/20000 dilution Predicted band size: 8.5/181kDa Observed band size: 120kDa