

---

## IGSF9 Rabbit pAb

Catalog Number: bs-9199R

Target Protein: IGSF9

Concentration: 1mg/ml

Form: Liquid

Host: Rabbit

Clonality: Polyclonal

Isotype: IgG

Applications: Flow-Cyt (1µg /Test)

Reactivity: Human (predicted:Mouse, Rat, Rabbit, Pig, Cow, Chicken, Dog)

Predicted MW: 124 kDa

Entrez Gene: 57549

Swiss Prot: Q9P2J2

Source: KLH conjugated synthetic peptide derived from human IGSF9: 551-680/1179.

Purification: affinity purified by Protein A

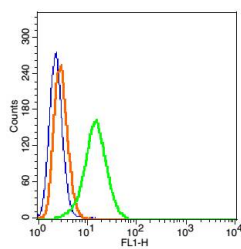
Storage: 0.01M TBS (pH7.4) with 1% BSA, 0.02% Proclin300 and 50% Glycerol.

Shipped at 4°C. Store at -20°C for one year. Avoid repeated freeze/thaw cycles.

**Background:** Ig (immunoglobulin) superfamily members exhibit functional characteristics including immune responses, growth factor signaling and cell adhesion. IGSF9 (immunoglobulin superfamily, member 9), also known as Nrt1 or IGSF9A, is a 1,179 amino acid single-pass type I membrane protein expressed in a wide variety of fetal tissues at eight and fourteen weeks of gestation. Belonging to the immunoglobulin superfamily and the Turtle family, IGSF9 is thought to play a role in dendrite outgrowth and synapse maturation. IGSF9 contains two fibronectin type-III domains and five Ig-like (immunoglobulin-like) domains. IGSF9 interacts with MAGI-2 and Shank 1, both of which contain SH3 (Src-homology 3) domains. Protein-protein interactions are central events in cellular signal transduction and are often mediated by SH3 domains. IGSF9 is encoded by a gene located on human chromosome 1q23.2 and mouse chromosome 1 H3.

### VALIDATION IMAGES

---



Blank control(blue): Hepg2 Cells(fixed with 2% paraformaldehyde (10 min)). Primary Antibody: Rabbit Anti-IGSF9/FITC Conjugated antibody (bs-9199R /FITC), Dilution: 1 $\mu$ g in 100  $\mu$ L 1X PBS containing 0.5% BSA; Isotype Control Antibody: Rabbit IgG/FITC(orange) ,used under the same conditions.