

bs-9190R**[Primary Antibody]****SLFN14 Rabbit pAb****Bioss**
ANTIBODIES

www.bioss.com.cn

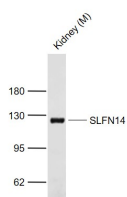
sales@bioss.com.cn

techsupport@bioss.com.cn

400-901-9800

— DATASHEET —

Host: Rabbit	Isotype: IgG	Applications: WB (1:500-2000)
Clonality: Polyclonal		Reactivity: Mouse (predicted: Human, Rat, Rabbit, Pig, Sheep, Cow, Dog)
GeneID: 342618	SWISS: P0C7P3	Predicted MW.: 104 kDa
Target: SLFN14		Subcellular Location: Nucleus
Immunogen: KLH conjugated synthetic peptide derived from human SLFN14: 181-280/912.		
Purification: affinity purified by Protein A		
Concentration: 1mg/ml		
Storage: 0.01M TBS (pH7.4) with 1% BSA, 0.02% Proclin300 and 50% Glycerol. Shipped at 4°C. Store at -20°C for one year. Avoid repeated freeze/thaw cycles.		
Background: Schlafen family members are preferentially expressed in lymphoid tissues and are differentially regulated during thymocyte maturation. Schlafen proteins function as suppressors of cell growth and are thought to play a role in the maintenance of T cell quiescence. The prototype member of the Schlafen family, Slfn1, is transcriptionally unregulated during thymocyte positive selection, and the induction of Slfn1 induces a G0/G1 arrest, suggesting that Slfn1 participates in the regulation of cell cycle and potentially acts as a determining factor for apoptosis. These proteins all contain a largely conserved core domain within the center of the sequence, and yet they are substantially diversified at the N terminus. Slfn14 (Schlafen family member 14) is a 912 amino acid protein belonging to the Schlafen family. Slfn14 exists as two alternatively spliced isoforms and is encoded by a gene mapping to human chromosome 17q12.		

— VALIDATION IMAGES —

Sample: Lane 1: Mouse Kidney tissue lysates
Primary: Anti-SLFN14 (bs-9190R) at 1/1000
dilution Secondary: IRDye800CW Goat Anti-
Rabbit IgG at 1/20000 dilution Predicted band
size: 104 kD Observed band size: 120 kD