

**bs-5289R****[ Primary Antibody ]****phospho-DOK1 (Tyr362) Rabbit pAb****Bioss**  
**ANTIBODIES**

www.bioss.com.cn

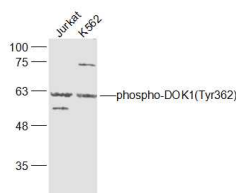
sales@bioss.com.cn

techsupport@bioss.com.cn

400-901-9800

**— DATASHEET —**

|   |                      |   |
|---|----------------------|---|
| <b>Host:</b> Rabbit   | <b>Isotype:</b> IgG  | <b>Applications:</b> WB (1:500-2000)                            |
| <b>Clonality:</b> Polyclonal  |                      | <b>Reactivity:</b> Human (predicted: Mouse, Rat, Pig, Cow, Dog) |
| <b>GeneID:</b> 1796   | <b>SWISS:</b> Q99704 |   |
| <b>Target:</b> DOK1 (Tyr362)  |                      | <b>Predicted MW.:</b> 62 kDa                                    |
| <b>Immunogen:</b> KLH conjugated Synthesised phosphopeptide derived from human DOK1 around the phosphorylation site of Tyr362: PI(p-Y)DE.   |                      | <b>Subcellular Location:</b> Cytoplasm                          |
| <b>Purification:</b> affinity purified by Protein A   |                      |   |
| <b>Concentration:</b> 1mg/ml  |                      |   |
| <b>Storage:</b> 0.01M TBS (pH7.4) with 1% BSA, 0.02% Proclin300 and 50% Glycerol.<br>Shipped at 4°C. Store at -20°C for one year. Avoid repeated freeze/thaw cycles.  |                      |   |
| <b>Background:</b> Docking protein 1 is constitutively tyrosine phosphorylated in hematopoietic progenitors isolated from chronic myelogenous leukemia (CML) patients in the chronic phase. It may be a critical substrate for p210(bcr/abl), a chimeric protein whose presence is associated with CML. Docking protein 1 contains a putative pleckstrin homology domain at the amino terminus and ten PXXP SH3 recognition motifs. Docking protein 2 binds p120 (RasGAP) from CML cells. It has been postulated to play a role in mitogenic signaling. |                      |   |

**— VALIDATION IMAGES —**

Sample: Jurkat(Human) Cell Lysate at 30 ug  
K562(Human) Cell Lysate at 30 ug Primary: Anti-phospho-DOK1(Tyr362) (bs-5289R) at 1/1000 dilution Secondary: IRDye800CW Goat Anti-Rabbit IgG at 1/20000 dilution Predicted band size: 62 kD Observed band size: 62 kD