
TNFRSF19 Rabbit pAb

Catalog Number: bs-3852R

Target Protein: TNFRSF19

Concentration: 1mg/ml

Form: Liquid

Host: Rabbit

Clonality: Polyclonal

Isotype: IgG

Applications: WB (1:500-2000)

Reactivity: Human, GuineaPig (predicted:Mouse, Rat, Rabbit, Pig, Cow, Chicken, Dog, Horse)

Predicted MW: 43 kDa

Subcellular: Cell membrane

Locations:

Entrez Gene: 55504

Swiss Prot: Q9NS68

Source: KLH conjugated synthetic peptide derived from human TROY: 102-200/423.

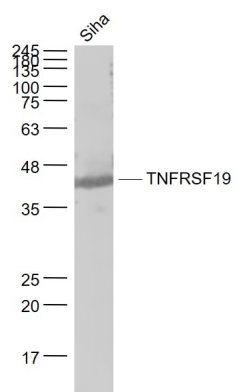
Purification: affinity purified by Protein A

Storage: 0.01M TBS (pH7.4) with 1% BSA, 0.02% Proclin300 and 50% Glycerol.

Shipped at 4°C. Store at -20°C for one year. Avoid repeated freeze/thaw cycles.

Background: TROY is a member of the TNF receptor superfamily. This receptor is highly expressed during embryonic development. It has been shown to interact with TRAF family members, and to activate the JNK signaling pathway when overexpressed in cells. This receptor is capable of inducing apoptosis by a caspase-independent mechanism, and it is thought to play an essential role in embryonic development. Alternatively spliced transcript variants encoding distinct isoforms have been described.

VALIDATION IMAGES



Sample: SiHa(Human) Cell Lysate at 30 ug Primary: Anti- TNFRSF19 (bs-3852R) at 1/1000 dilution Secondary: IRDye800CW Goat Anti-Rabbit IgG at 1/20000 dilution Predicted band size: 43 kD Observed band size: 43 kD