
CHRD2 Rabbit pAb

Catalog Number: bs-3860R

Target Protein: CHRD2

Concentration: 1mg/ml

Form: Liquid

Host: Rabbit

Clonality: Polyclonal

Isotype: IgG

Applications: WB (1:500-2000)

Reactivity: Mouse, Rat (predicted:Human, Sheep, Cow)

Predicted MW: 45 kDa

Entrez Gene: 25884

Swiss Prot: Q6WN34

Source: KLH conjugated synthetic peptide derived from human CHRD2: 351-429/429.

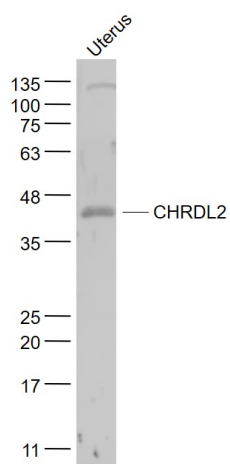
Purification: affinity purified by Protein A

Storage: 0.01M TBS (pH7.4) with 1% BSA, 0.02% Proclin300 and 50% Glycerol.

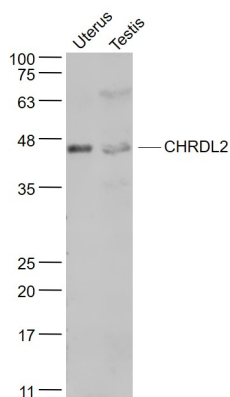
Shipped at 4°C. Store at -20°C for one year. Avoid repeated freeze/thaw cycles.

Background: CHRD2 is a novel chordin like protein that can act as a BMP antagonist. A member of the chordin family of proteins, it contains a signal peptide and three CR (cysteine-rich repeat) domains. When expressed as a recombinant protein it is secreted and binds to activin A, but not to BMP-2, -4, -6. Differential expression has been detected in developing chondrocytes, myoblasts, osteoblasts, and osteoarthritic joints. Complex alternative splicing of CHRD2 potentially results in distinct isoforms that differ at their C termini, in the expression of signal peptide, and in the content of CR domains. CHRD2 was originally characterized as a novel protein exclusively expressed in breast, lung, and colon tumors.

VALIDATION IMAGES



Sample: Uterus(Mouse) Lysate at 40 ug Primary: Anti- CHRDL2 (bs-3860R) at 1/1000 dilution Secondary: IRDye800CW Goat Anti-Rabbit IgG at 1/20000 dilution Predicted band size: 45 kD Observed band size: 45 kD



Sample: Uterus (Rat) Lysate at 40 ug Testis (Rat) Lysate at 40 ug Primary: Anti- CHRDL2 (bs-3860R) at 1/1000 dilution Secondary: IRDye800CW Goat Anti-Rabbit IgG at 1/20000 dilution Predicted band size: 45 kD Observed band size: 45 kD