

bs-10118R**[Primary Antibody]****phospho-Ron (Tyr1238+Tyr1239) Rabbit pAb****BioSS**
ANTIBODIES

www.bioss.com.cn

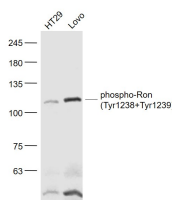
sales@bioss.com.cn

techsupport@bioss.com.cn

400-901-9800

— DATASHEET —

Host: Rabbit Clonality: Polyclonal GeneID: 4486 Target: Ron (Tyr1238+Tyr1239) Immunogen: KLH conjugated synthesised phosphopeptide derived from human MST1R around the phosphorylation site of Tyr1238+Tyr1239: E(p-Y)(p-Y)SV. Purification: affinity purified by Protein A Concentration: 1mg/ml Storage: 0.01M TBS (pH7.4) with 1% BSA, 0.02% Proclin300 and 50% Glycerol. Shipped at 4°C. Store at -20°C for one year. Avoid repeated freeze/thaw cycles. Background: MST1R/Ron, a HGF Receptor/MET-type protein kinase, mediates the biological activities of macrophage-stimulating protein (MSP), a multifunctional cytokine that regulates cell adhesion, motility, growth, and survival. The protein is a membrane-spanning, disulfide-linked heterodimer, which results from cleavage of a glycosylated precursor into 35-kD (alpha) and 150-kD (beta) subunits. Ligand binding results in tyrosine phosphorylation of the beta chain. In knockout studies, MST1R/RON (-/-) mice failed to survive past the periimplantation period. The MST1R/RON gene has been mapped to 3p21, a region of frequent deletion or mutation in small cell lung and renal carcinoma, and has been implicated in the progression of several epithelial cancers. Ron expression has been documented in many normal human tissues. ESTs have been isolated from several tissue libraries, including normal colon, mouth, prostate, and testis and cancerous colon, prostate, stomach, and uterus.	Isotype: IgG SWISS: Q04912 Applications: WB (1:500-2000) Reactivity: Human, Rat (predicted: Mouse) Predicted MW.: 30/119/150 kDa Subcellular Location: Cell membrane
---	--

— VALIDATION IMAGES —

Sample: HT29(Human) Cell Lysate at 30 ug
 Lovo(Human) Cell Lysate at 30 ug Primary: Anti-phospho-Ron (Tyr1238+Tyr1239) (bs-10118R) at 1/1000 dilution Secondary: IRDye800CW Goat Anti-Rabbit IgG at 1/20000 dilution Predicted band size: 30/119/150 kD Observed band size: 119 kD