

bs-10523R**[Primary Antibody]****Bioss**
ANTIBODIES

www.bioss.com.cn

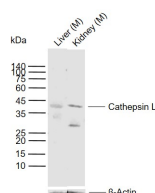
sales@bioss.com.cn

techsupport@bioss.com.cn

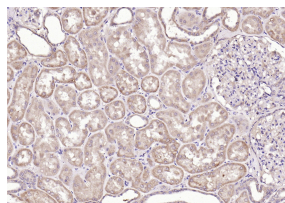
400-901-9800

Cathepsin L(heavy chain) Rabbit pAb**— DATASHEET —**

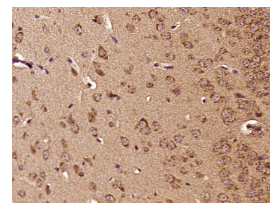
Host: Rabbit	Isotype: IgG	Applications: WB (1:500-2000) IHC-P (1:100-500) IHC-F (1:100-500) IF (1:100-500) Reactivity: Human, Mouse (predicted: Rat) Predicted MW.: 19/37 kDa Subcellular Location: Lysosome ,Cytoplasmic vesicle ,Membrane ,Secreted ,Cell membrane
Clonality: Polyclonal		
GeneID: 13039	SWISS: P06797	
Target: Cathepsin L(heavy chain)		
Immunogen: KLH conjugated synthetic peptide derived from mouse Cathepsin L: 101-200/334.		
Purification: affinity purified by Protein A		
Concentration: 1mg/ml		
Storage: 0.01M TBS (pH7.4) with 1% BSA, 0.02% Proclin300 and 50% Glycerol. Shipped at 4°C. Store at -20°C for one year. Avoid repeated freeze/thaw cycles.		
Background: The protein encoded by this gene is a lysosomal cysteine proteinase that plays a major role in intracellular protein catabolism. Its substrates include collagen and elastin, as well as alpha-1 protease inhibitor, a major controlling element of neutrophil elastase activity. The encoded protein has been implicated in several pathologic processes, including myofibril necrosis in myopathies and in myocardial ischemia, and in the renal tubular response to proteinuria. This protein, which is a member of the peptidase C1 family, is a dimer composed of disulfide-linked heavy and light chains, both produced from a single protein precursor. At least two transcript variants encoding the same protein have been found for this gene.		

— VALIDATION IMAGES —

Sample: Lane 1: Mouse Liver tissue lysates Lane 2: Mouse Kidney tissue lysates Primary: Anti-Cathepsin L(heavy chain) (bs-10523R) at 1/1000 dilution Secondary: IRDye800CW Goat Anti-Rabbit IgG at 1/20000 dilution Predicted band size: 19/37 kDa Observed band size: 40 kDa



Paraformaldehyde-fixed, paraffin embedded (Human kidney); Antigen retrieval by boiling in sodium citrate buffer (pH6.0) for 15min; Block endogenous peroxidase by 3% hydrogen peroxide for 20 minutes; Blocking buffer (normal goat serum) at 37°C for 30min; Antibody incubation with (Cathepsin L(heavy chain)) Polyclonal Antibody, Unconjugated (bs-10523R) at 1:200 overnight at 4°C, followed by operating according to SP Kit(Rabbit) (sp-0023) instructions and DAB staining.



Paraformaldehyde-fixed, paraffin embedded (Mouse brain); Antigen retrieval by boiling in sodium citrate buffer (pH6.0) for 15min; Block endogenous peroxidase by 3% hydrogen peroxide for 20 minutes; Blocking buffer (normal goat serum) at 37°C for 30min; Antibody incubation with (Cathepsin L) Polyclonal Antibody, Unconjugated (bs-10523R) at 1:400 overnight at 4°C, followed by operating according to SP Kit(Rabbit) (sp-0023) instructions and DAB staining.