

## SEC31B Rabbit pAb

Catalog Number: bs-4454R

Target Protein: SEC31B

Concentration: 1mg/ml

Form: Liquid

Host: Rabbit

Clonality: Polyclonal

Isotype: IgG

Applications: WB (1:500-2000)

Reactivity: Human

Predicted MW: 129 kDa

Entrez Gene: 25956

Swiss Prot: Q9NQW1

Source: KLH conjugated synthetic peptide derived from human SEC31B: 481-580/1179.

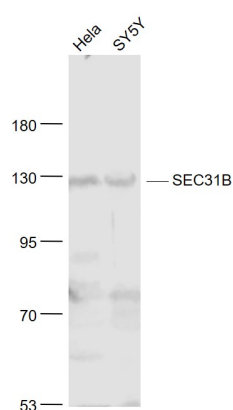
Purification: affinity purified by Protein A

Storage: Preservative: 0.02% Proclin300, Constituents: 1% BSA, 0.01M PBS, pH7.4.

Shipped at 4°C. Store at -20°C for one year. Avoid repeated freeze/thaw cycles.

**Background:** This gene encodes a protein of unknown function. The protein has moderate similarity to rat VAP1 protein which is an endosomal membrane-associated protein, containing a putative Ca<sup>2+</sup>/calmodulin-dependent kinase II phosphorylation site. [provided by RefSeq, Jul 2008]

### VALIDATION IMAGES



Sample: HeLa(Human) Cell Lysate at 30 ug SY5Y(Human) Cell Lysate at 30 ug Primary: Anti- SEC31B (bs-4454R) at 1/1000 dilution Secondary: IRDye800CW Goat Anti-Rabbit IgG at 1/20000 dilution Predicted band size: 129 kD Observed band size: 129 kD