

bs-23111R**[Primary Antibody]****Ly-6G Rabbit pAb****BioSS**
ANTIBODIES

www.bioss.com.cn

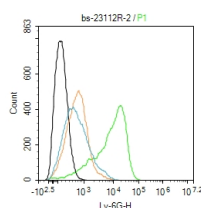
sales@bioss.com.cn

techsupport@bioss.com.cn

400-901-9800

— DATASHEET —

Host: Rabbit Clonality: Polyclonal GeneID: 546644 Target: Ly-6G Immunogen: KLH conjugated synthetic peptide derived from mouse Ly-6G: 4-50/134. Purification: affinity purified by Protein A Concentration: 1mg/ml Storage: 0.01M TBS (pH7.4) with 1% BSA, 0.02% Proclin300 and 50% Glycerol. Shipped at 4°C. Store at -20°C for one year. Avoid repeated freeze/thaw cycles. Background: Ly6G is a GPI-anchored protein, that is also known as the myeloid differentiation antigen Gr1. The antigen is transiently expressed on monocytes in the bone marrow. The level of antigen expression in the bone marrow directly correlates with granulocyte differentiation and maturation. Ly6G is expressed predominantly on neutrophils, also in a subset of eosinophils, differentiating pre-monocytes, and plasmacytoid dendritic cells.	Isotype: IgG SWISS: P35461	Applications: Flow-Cyt (2ug/Test) Reactivity: Mouse Predicted MW.: 14 kDa Subcellular Location: Cell membrane
--	---	--

— VALIDATION IMAGES —

Blank control: sp2/0. Primary Antibody (green line): Rabbit Anti-Ly-6G antibody (bs-23111R)
 Dilution: 2ug/Test; Secondary Antibody : Goat anti-rabbit IgG-FITC Dilution: 0.5ug/Test.
 Protocol The cells were incubated in 5%BSA to block non-specific protein-protein interactions for 30 min at room temperature .Cells stained with Primary Antibody for 30 min at room temperature. The secondary antibody used for 40 min at room temperature. Acquisition of 20,000 events was performed.

— SELECTED CITATIONS —

- **[IF=3.269]** Meihua Ji. et al. Oxycodone protects cardiac microvascular endothelial cells against ischemia/reperfusion injury by binding to Sigma-1 Receptor. BIOENGINEERED. Bioengineered. 2022;13(4):9628-9644 IF ;Rat. 35412431