

**bs-20881R****[ Primary Antibody ]****SLC23A3 Rabbit pAb****BioSS**  
**ANTIBODIES**

www.bioss.com.cn

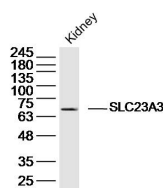
sales@bioss.com.cn

techsupport@bioss.com.cn

400-901-9800

**— DATASHEET —**

<b>Host:</b> Rabbit	<b>Isotype:</b> IgG	<b>Applications:</b> WB (1:500-2000)
<b>Clonality:</b> Polyclonal		<b>Reactivity:</b> Mouse
<b>GeneID:</b> 22626	<b>SWISS:</b> Q60850	
<b>Target:</b> SLC23A3		
<b>Immunogen:</b> KLH conjugated synthetic peptide derived from mouse SLC23A3: 201-300/611. < Extracellular >		<b>Predicted MW.:</b> 65 kDa
<b>Purification:</b> affinity purified by Protein A		<b>Subcellular Location:</b> Cell membrane
<b>Concentration:</b> 1mg/ml		
<b>Storage:</b> 0.01M TBS (pH7.4) with 1% BSA, 0.02% Proclin300 and 50% Glycerol. Shipped at 4°C. Store at -20°C for one year. Avoid repeated freeze/thaw cycles.		
<b>Background:</b> SLC23A3 (Solute Carrier Family 23, Member 3) is a Protein Coding gene. Diseases associated with SLC23A3 include epilepsy, generalized, with febrile seizures plus, type 5. GO annotations related to this gene include transporter activity. An important paralog of this gene is SLC23A1.		

**— VALIDATION IMAGES —**

Sample: Kidney (Mouse) Lysate at 40 ug Primary:  
Anti-SLC23A3 (bs-20881R) at 1/300 dilution  
Secondary: IRDye800CW Goat Anti-Rabbit IgG at  
1/20000 dilution Predicted band size: 65 kD  
Observed band size: 65 kD