

Ki-67 Rabbit pAb

Catalog Number: bs-23103R

Target Protein: Ki-67

Concentration: 1mg/ml

Form: Liquid

Host: Rabbit

Clonality: Polyclonal

Isotype: IgG

Applications: IHC-P (1:200-800), IHC-F (1:200-800), IF (1:300-800), ICC/IF (1:100)

Reactivity: Human

Predicted MW: 358 kDa

Entrez Gene: 4288

Swiss Prot: P46013

Source: KLH conjugated synthetic peptide derived from human Ki-67: 1231-1330/3256.

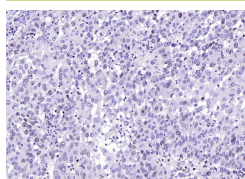
Purification: affinity purified by Protein A

Storage: 0.01M TBS (pH7.4) with 1% BSA, 0.02% Proclin300 and 50% Glycerol.

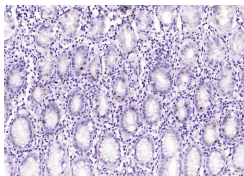
Shipped at 4°C. Store at -20°C for one year. Avoid repeated freeze/thaw cycles.

Background: Ki67 antigen is the prototypic cell cycle related nuclear protein, expressed by proliferating cells in all phases of the active cell cycle (G1, S, G2 and M phase). It is absent in resting (G0) cells. Ki67 antibodies are useful in establishing the cell growing fraction in neoplasms (immunohistochemically quantified by determining the number of Ki67 positive cells among the total number of resting cells = Ki67 index). In neoplastic tissues the prognostic value is comparable to the tritiated thymidine labelling index. The correlation between low Ki67 index and histologically low grade tumours is strong. Ki67 is routinely used as a neuronal marker of cell cycling and proliferation.

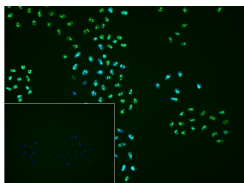
VALIDATION IMAGES



Paraformaldehyde-fixed, paraffin embedded Human Lung Cancer; Antigen retrieval by boiling in sodium citrate buffer (pH6.0) for 15 min; Antibody incubation with Ki-67 Polyclonal Antibody, Unconjugated (bs-23103R) at 1:200 overnight at 4°C, followed by conjugation to the SP Kit (Rabbit, SP-0023) and DAB (C-0010) staining.



Paraformaldehyde-fixed, paraffin embedded Human Stomach; Antigen retrieval by boiling in sodium citrate buffer (pH6.0) for 15 min; Antibody incubation with Ki-67 Polyclonal Antibody, Unconjugated (bs-23103R) at 1:200 overnight at 4°C, followed by conjugation to the SP Kit (Rabbit, SP-0023) and DAB (C-0010) staining.



4% Paraformaldehyde-fixed HeLa(H) cell; Triton X-100 at r.t. for 20 min; Antibody incubation with (Ki-67) polyclonal Antibody, unconjugated (bs-23103R) 1:100, 90 min at 37°C; followed by conjugated Goat Anti-Rabbit IgG antibody (green, bs-0295G-FITC) at 37°C for 90 min, DAPI (blue, C02-04002) was used to stain the cell nuclei. PBS instead of the primary antibody was used as the blank control.

PRODUCT SPECIFIC PUBLICATIONS

[IF=15.1] Yajie Gao. et al. Step-by-step guided photo-chemotherapy nanoplatfoms for efficiently suppressing cervical carcinoma metastasis by hijacking intracellular metabolism. CHEM ENG J. 2024 Apr;:151754 IHC ; Mouse . 10.1016/j.cej.2024.151754

[IF=12.153] Tang, Chao. et al. RGS2 promotes estradiol biosynthesis by trophoblasts during human pregnancy. EXP MOL MED. 2023 Jan;:1-13 IHC ; Mouse . 36653442

[IF=10.6] Chen Yang. et al. Copper-coordination driven brain-targeting nanoassembly for efficient glioblastoma multiforme immunotherapy by cuproptosis-mediated tumor immune microenvironment reprogramming. J NANOBIOECHNOL. 2024 Dec;22(1):1-19 IHC ; Mouse . 39731102

[IF=6.819] Hongchao Xu. et al. A facile method for anti-cancer drug encapsulation into polymersomes with a core-satellite structure. DRUG DELIV. 2022 Jul 29 IHC ; Mouse . 35904177

[IF=6.529] Hao Li. et al. Dominant negative TGF- β receptor type II in T lymphocytes promotes anti-tumor immunity by modulating T cell subsets and enhancing CTL responses. Biomed Pharmacother. 2022 Apr;148:112754 IHC ; Mouse . 10.1016/j.biopha.2022.112754