

bs-23099R**[Primary Antibody]****EXOSC3 Rabbit pAb****Bioss**
ANTIBODIES

www.bioss.com.cn

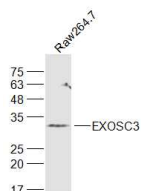
sales@bioss.com.cn

techsupport@bioss.com.cn

400-901-9800

— DATASHEET —

Host: Rabbit	Isotype: IgG	Applications: WB (1:500-2000)
Clonality: Polyclonal		Reactivity: Human, Mouse (predicted: Rat, Rabbit, Sheep, Chicken, Horse)
GeneID: 51010	SWISS: Q9NQT5	Predicted MW.: 29 kDa
Target: EXOSC3		Subcellular Location: Cytoplasm ,Nucleus
Immunogen: KLH conjugated synthetic peptide derived from human EXOSC3: 101-200/275.		
Purification: affinity purified by Protein A		
Concentration: 1mg/ml		
Storage: 0.01M TBS (pH7.4) with 1% BSA, 0.02% Proclin300 and 50% Glycerol. Shipped at 4°C. Store at -20°C for one year. Avoid repeated freeze/thaw cycles.		
Background: The exosome is a multisubunit complex of 3' to 5' exoribonucleases. It is involved in a variety of cellular processes and is responsible for degrading unstable mRNAs that contain AU- rich elements in their untranslated 3' region. EXOSC3 (exosome component 3), also known as p10, CGI-102, RRP40 (Ribosomal RNA-processing protein 40), Rrp40p or hRrp40p, is a component of the exosome multienzyme ribonuclease complex. Localizing to the cytoplasm and nucleolus, EXOSC3 contains a putative S1 RNA- binding domain and is capable of binding RNA. EXOSC3 is a component of the top cap of the exosome and is essential for exosome stability. In addition, EXOSC3 is required for the processing of the 7S pre-RNA to the mature 5.8S rRNA.		

— VALIDATION IMAGES —

Sample: Raw264.7(Human) Cell Lysate at 30 ug

Primary: Anti-EXOSC3 (bs-23099R) at 1/300

dilution Secondary: IRDye800CW Goat Anti-

Rabbit IgG at 1/20000 dilution Predicted band

size: 29 kD Observed band size: 29 kD