
NIF1 Rabbit pAb

Catalog Number: bs-19246R

Target Protein: NIF1

Concentration: 1mg/ml

Form: Liquid

Host: Rabbit

Clonality: Polyclonal

Isotype: IgG

Applications: WB (1:500-2000)

Reactivity: Mouse, Rat (predicted:Human, Rabbit, Pig, Sheep, Cow, Dog, Horse)

Predicted MW: 145 kDa

Subcellular Nucleus

Locations:

Entrez Gene: 63925

Swiss Prot: Q9H4Z2

Source: KLH conjugated synthetic peptide derived from human NIF1: 591-690/1342.

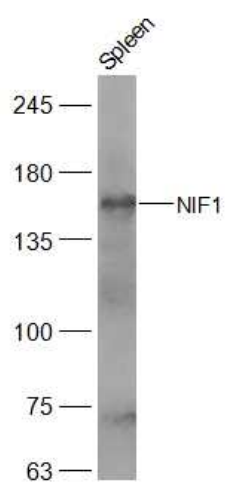
Purification: affinity purified by Protein A

Storage: 0.01M TBS (pH7.4) with 1% BSA, 0.02% Proclin300 and 50% Glycerol.

Shipped at 4°C. Store at -20°C for one year. Avoid repeated freeze/thaw cycles.

Background: The protein encoded by this gene enhances transcriptional activation by ligand-bound nuclear hormone receptors. However, it does this not by direct interaction with the receptor, but by direct interaction with the nuclear hormone receptor transcriptional coactivator NRC. The encoded protein may function by altering local chromatin structure. [provided by RefSeq, Jul 2008]

VALIDATION IMAGES



Sample: Spleen (Rat) Lysate at 40 ug Primary: Anti-NIF1 (bs-19246R) at 1/300 dilution Secondary: IRDye800CW Goat Anti-Rabbit IgG at 1/20000 dilution Predicted band size: 145 kD Observed band size: 145 kD