

## KCNE1L Rabbit pAb

Catalog Number: bs-9929R

Target Protein: KCNE1L

Concentration: 1mg/ml

Form: Liquid

Host: Rabbit

Clonality: Polyclonal

Isotype: IgG

Applications: Flow-Cyt (1ug/test)

Reactivity: Human (predicted: Mouse, Rat, Rabbit, Pig, Sheep, Cow)

Predicted MW: 15 kDa

Entrez Gene: 23630

Swiss Prot: Q9UJ90

Source: KLH conjugated synthetic peptide derived from human KCNE1L: 11-110/142.

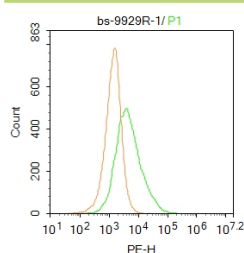
Purification: affinity purified by Protein A

Storage: 0.01M TBS (pH7.4) with 1% BSA, 0.02% Proclin300 and 50% Glycerol.

Shipped at 4°C. Store at -20°C for one year. Avoid repeated freeze/thaw cycles.

**Background:** KCNE1L belongs to the potassium channel KCNE family which represent the most complex class of voltage-gated ion channels from both functional and structural standpoints. Their diverse functions include regulating neurotransmitter release, heart rate, insulin secretion, neuronal excitability, epithelial electrolyte transport, smooth muscle contraction, and cell volume.

### VALIDATION IMAGES



Blank control: Hela. Primary Antibody (green line): Rabbit Anti-KCNE1L antibody (bs-9929R) Dilution: 1µg /10<sup>6</sup> cells; Isotype Control Antibody (orange line): Rabbit IgG . Secondary Antibody : Goat anti-rabbit IgG-PE Dilution: 1µg /test. Protocol The cells were fixed with 4% PFA (10min at room temperature) and then permeabilized with 20% PBST for 20 min at room temperature. The cells were then incubated in 5% BSA to block non-specific protein-protein interactions for 30 min at room temperature. Cells stained with Primary Antibody for 30 min at room temperature. The secondary antibody used for 40 min at room temperature. Acquisition of 20,000 events was performed.