

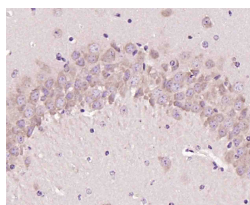
**bs-9241R****[ Primary Antibody ]****RNF31 Rabbit pAb****BioSS**  
**ANTIBODIES**

www.bioss.com.cn

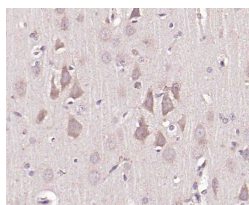
sales@bioss.com.cn

techsupport@bioss.com.cn

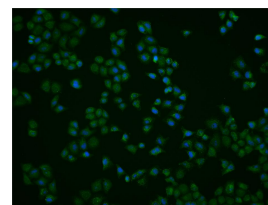
400-901-9800

**— DATASHEET —****Host:** Rabbit**Isotype:** IgG**Clonality:** Polyclonal**GeneID:** 55072**SWISS:** Q96EP0**Target:** RNF31**Immunogen:** KLH conjugated synthetic peptide derived from human RNF31/HOIP: 671-780/1072.**Purification:** affinity purified by Protein A**Concentration:** 1mg/ml**Storage:** 0.01M TBS (pH7.4) with 1% BSA, 0.02% Proclin300 and 50% Glycerol.  
Shipped at 4°C. Store at -20°C for one year. Avoid repeated freeze/thaw cycles.**Background:** E3 ubiquitin-protein ligase component of the LUBAC complex which conjugates linear polyubiquitin chains in a head-to-tail manner to substrates and plays a key role in NF-kappa-B activation and regulation of inflammation. LUBAC conjugates linear polyubiquitin to IKKKG and RIPK1 and is involved in activation of the canonical NF-kappa-B and the JNK signaling pathways. Linear ubiquitination mediated by the LUBAC complex interferes with TNF-induced cell death and thereby prevents inflammation. LUBAC is proposed to be recruited to the TNF-R1 signaling complex (TNF-RSC) following polyubiquitination of TNF-RSC components by BIRC2 and/or BIRC3 and to conjugate linear polyubiquitin to IKKKG and possibly other components contributing to the stability of the complex. Binds polyubiquitin of different linkage types.**Applications:** IHC-P (1:100-500)**IHC-F** (1:100-500)**IF** (1:50-200)**Flow-Cyt** (2ug/Test)**ICC/IF** (1:50)**Reactivity:** Human, Mouse, Rat  
(predicted: Rabbit, Pig, Dog, Horse)**Predicted MW.:** 118 kDa**Subcellular Location:** Cytoplasm**— VALIDATION IMAGES —**

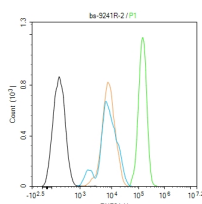
Paraformaldehyde-fixed, paraffin embedded (mouse brain); Antigen retrieval by boiling in sodium citrate buffer (pH6.0) for 15min; Block endogenous peroxidase by 3% hydrogen peroxide for 20 minutes; Blocking buffer (normal goat serum) at 37°C for 30min; Incubation with (RNF31) Polyclonal Antibody, Unconjugated (bs-9241R) at 1:200 overnight at 4°C, followed by operating according to SP Kit(Rabbit) (sp-0023) instructions and DAB staining.



Paraformaldehyde-fixed, paraffin embedded (rat brain); Antigen retrieval by boiling in sodium citrate buffer (pH6.0) for 15min; Block endogenous peroxidase by 3% hydrogen peroxide for 20 minutes; Blocking buffer (normal goat serum) at 37°C for 30min; Incubation with (RNF31) Polyclonal Antibody, Unconjugated (bs-9241R) at 1:200 overnight at 4°C, followed by operating according to SP Kit(Rabbit) (sp-0023) instructions and DAB staining.



Hela cell; 4% Paraformaldehyde-fixed; Triton X-100 at room temperature for 20 min; Blocking buffer (normal goat serum, C-0005) at 37°C for 20 min; Antibody incubation with (RNF31) polyclonal Antibody, Unconjugated (bs-9241R) 1:50, 90 minutes at 37°C; followed by a conjugated Goat Anti-Rabbit IgG antibody at 37°C for 90 minutes, DAPI (blue, C02-04002) was used to stain the cell nuclei.

Blank control (black line) :Hela. Primary  
Antibody (green line): Rabbit Anti-RNF31

Important Note: This product as supplied is intended for research use only, not for use in human, therapeutic or diagnostic applications.

antibody (bs-9241R) Dilution:2ug/Test;  
Secondary Antibody (white blue line) : Goat  
anti-rabbit IgG-FITC Dilution: 0.5ug/Test. Isotype  
control (orange line) : Normal Rabbit IgG  
Protocol The cells were fixed with 4% PFA  
(10min at room temperature)and then  
permeabilized with 90% ice-cold methanol for  
20 min at -20°C, The cells were then incubated in  
5%BSA to block non-specific protein-protein  
interactions for 30 min at room temperature  
.Cells stained with Primary Antibody for 30 min  
at room temperature. The secondary antibody  
used for 40 min at room temperature.  
Acquisition of 20,000 events was performed.

---

## — SELECTED CITATIONS —

- **[IF=8.9]** Jiali Ye. et al. Polystyrene nanoplastics and cadmium co-exposure aggravated cardiomyocyte damage in mice by regulating PANoptosis pathway. ENVIRON POLLUT. 2024 Mar;;123713 WB ;Mouse. 38462200