

bs-10417R**[Primary Antibody]****BioSS**
ANTIBODIES

www.bioss.com.cn

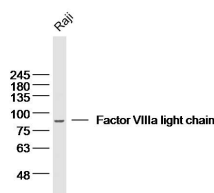
sales@bioss.com.cn

techsupport@bioss.com.cn

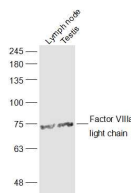
400-901-9800

Factor VIIIa light chain Rabbit pAb**— DATASHEET —**

| | |
|---|---|
| Host: Rabbit Clonality: Polyclonal GeneID: 2157 Target: Factor VIIIa light chain Immunogen: KLH conjugated synthetic peptide derived from human Factor VIIIa light chain: 1751-1850/2351. Purification: affinity purified by Protein A Concentration: 1mg/ml Storage: 0.01M TBS (pH7.4) with 1% BSA, 0.02% Proclin300 and 50% Glycerol. Shipped at 4°C. Store at -20°C for one year. Avoid repeated freeze/thaw cycles. Background: This gene encodes coagulation factor VIII, which participates in the intrinsic pathway of blood coagulation; factor VIII is a cofactor for factor IXa which, in the presence of Ca ²⁺ and phospholipids, converts factor X to the activated form Xa. This gene produces two alternatively spliced transcripts. Transcript variant 1 encodes a large glycoprotein, isoform a, which circulates in plasma and associates with von Willebrand factor in a noncovalent complex. This protein undergoes multiple cleavage events. Transcript variant 2 encodes a putative small protein, isoform b, which consists primarily of the phospholipid binding domain of factor VIIIc. This binding domain is essential for coagulant activity. Defects in this gene results in hemophilia A, a common recessive X-linked coagulation disorder. [provided by RefSeq, Jul 2008]. | Isotype: IgG SWISS: P00451 Applications: WB (1:500-2000) Reactivity: Human, Mouse Predicted MW.: 75 kDa Subcellular Location: Secreted ,Extracellular matrix |
|---|---|

— VALIDATION IMAGES —

Sample: Raji (human) cell Lysate at 30 ug
Primary: Anti- Factor VIIIa light chain (bs-10417R) at 1/300 dilution
Secondary: IRDye800CW Goat Anti-Rabbit IgG at 1/20000 dilution
Predicted band size: 75kD
Observed band size: 85kD



Sample: Lymph node (Mouse) Lysate at 40 ug
Testis (Mouse) Lysate at 40 ug
Primary: Anti- Factor VIIIa light chain (bs-10417R) at 1/300 dilution
Secondary: IRDye800CW Goat Anti-Rabbit IgG at 1/20000 dilution
Predicted band size: 75 kD
Observed band size: 75 kD