

bs-9219R**[Primary Antibody]****BioSS**
ANTIBODIES

www.bioss.com.cn

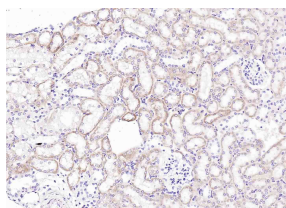
sales@bioss.com.cn

techsupport@bioss.com.cn

400-901-9800

C1orf149 Rabbit pAb**— DATASHEET —**

Host: Rabbit	Isotype: IgG	Applications: IHC-P (1:100-500) IHC-F (1:100-500) IF (1:50-200) Reactivity: Mouse (predicted: Human, Rat, Rabbit, Sheep, Cow, Dog) Predicted MW.: 22 kDa Subcellular Location: Cytoplasm ,Nucleus
Clonality: Polyclonal		
GeneID: 64769	SWISS: Q9HAF1	
Target: C1orf149		
Immunogen: KLH conjugated synthetic peptide derived from human C1orf149: 121-191/191.		
Purification: affinity purified by Protein A		
Concentration: 1mg/ml		
Storage: 0.01M TBS (pH7.4) with 1% BSA, 0.02% Proclin300 and 50% Glycerol. Shipped at 4°C. Store at -20°C for one year. Avoid repeated freeze/thaw cycles.		

— VALIDATION IMAGES —

Paraformaldehyde-fixed, paraffin embedded (mouse kidney); Antigen retrieval by boiling in sodium citrate buffer (pH6.0) for 15min; Block endogenous peroxidase by 3% hydrogen peroxide for 20 minutes; Blocking buffer (normal goat serum) at 37°C for 30min; Incubation with (C1orf149) Polyclonal Antibody, Unconjugated (bs-9219R) at 1:200 overnight at 4°C, followed by operating according to SP Kit(Rabbit) (sp-0023) instructions and DAB staining.