

**bs-9423R****[ Primary Antibody ]****BioSS**  
**ANTIBODIES**

www.bioss.com.cn

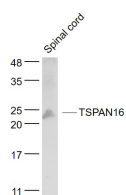
sales@bioss.com.cn

techsupport@bioss.com.cn

400-901-9800

**TSPAN16 Rabbit pAb****— DATASHEET —**

<b>Host:</b> Rabbit	<b>Isotype:</b> IgG	<b>Applications:</b> WB (1:500-2000)
<b>Clonality:</b> Polyclonal		<b>Reactivity:</b> Mouse (predicted: Human)
<b>GeneID:</b> 26526	<b>SWISS:</b> Q9UKR8	
<b>Target:</b> TSPAN16		
<b>Immunogen:</b> KLH conjugated synthetic peptide derived from human TSPAN16/TM4-B: 81-93/245. < Extracellular >		<b>Predicted MW.:</b> 26 kDa
<b>Purification:</b> affinity purified by Protein A		<b>Subcellular Location:</b> Cell membrane
<b>Concentration:</b> 1mg/ml		
<b>Storage:</b> 0.01M TBS (pH7.4) with 1% BSA, 0.02% Proclin300 and 50% Glycerol. Shipped at 4°C. Store at -20°C for one year. Avoid repeated freeze/thaw cycles.		
<b>Background:</b> TM4-B, also known as TSPAN16 (tetraspanin-16) or TM4SF16 (transmembrane 4 superfamily member 16), is a 245 amino acid multi-pass membrane protein that belongs to the tetraspanin (TM4SF) family. Members of the TM4SF family mediate signal transduction events that play a role in the regulation of cell development, activation, growth and motility. TM4-B is broadly expressed in most human tissues and cell lines including neural and bone marrow derived tissues. The gene that encodes TM4-B contains nearly 31,000 bases and maps to human chromosome 19p13.2. Chromosome 19 consists of over 63 million bases, houses approximately 1,400 genes and is recognized for having the greatest gene density of the human chromosomes. It is the genetic home for a number of immunoglobulin (Ig) superfamily members, including the killer cell and leukocyte Ig-like receptors, a number of ICAMs, the CEACAM and PSG families and Fc receptors (FcRs).		

**— VALIDATION IMAGES —**

Sample: Spinal cord(Mouse) Lysate at 40 ug  
Primary: Anti- TSPAN16 (bs-9423R) at 1/1000  
dilution Secondary: IRDye800CW Goat Anti-  
Rabbit IgG at 1/20000 dilution Predicted band  
size: 26 kD Observed band size: 25 kD