

bs-1726R**[Primary Antibody]****ERCC1 Rabbit pAb****Bioss**
ANTIBODIES

www.bioss.com.cn

sales@bioss.com.cn

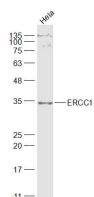
techsupport@bioss.com.cn

400-901-9800

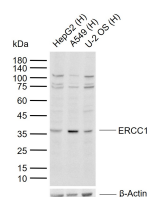
— DATASHEET —**Host:** Rabbit**Isotype:** IgG**Clonality:** Polyclonal**GeneID:** 2067**SWISS:** P07992**Target:** ERCC1**Immunogen:** KLH conjugated synthetic peptide derived from human ERCC1: 151-250/297.**Purification:** affinity purified by Protein A**Concentration:** 1mg/ml**Storage:** 0.01M TBS (pH7.4) with 1% BSA, 0.02% Proclin300 and 50% Glycerol.

Shipped at 4°C. Store at -20°C for one year. Avoid repeated freeze/thaw cycles.

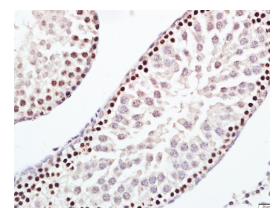
Background: The product of this gene functions in the nucleotide excision repair pathway, and is required for the repair of DNA lesions such as those induced by UV light or formed by electrophilic compounds including cisplatin. The encoded protein forms a heterodimer with the XPF endonuclease (also known as ERCC4), and the heterodimeric endonuclease catalyzes the 5' incision in the process of excising the DNA lesion. The heterodimeric endonuclease is also involved in recombinational DNA repair and in the repair of inter-strand crosslinks. Mutations in this gene result in cerebrooculofacioskeletal syndrome, and polymorphisms that alter expression of this gene may play a role in carcinogenesis. Multiple transcript variants encoding different isoforms have been found for this gene. The last exon of this gene overlaps with the CD3e molecule, epsilon associated protein gene on the opposite strand. [provided by RefSeq, Oct 2009]

Applications: WB (1:500-2000)**IHC-P** (1:100-500)**IHC-F** (1:100-500)**IF** (1:100-500)**Reactivity:** Human, Mouse, Rat
(predicted: Pig, Cow, Dog)**Predicted
MW.:** 36 kDa**Subcellular
Location:** Nucleus**— VALIDATION IMAGES —**

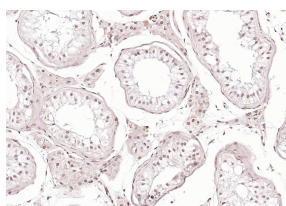
Sample: HeLa(Human) Cell Lysate at 30 ug
Primary: Anti-ERCC1 (bs-1726R) at 1/1000
dilution Secondary: IRDye800CW Goat Anti-
Rabbit IgG at 1/20000 dilution Predicted band
size: 36 kD Observed band size: 35 kD



Sample: Lane 1: Human HepG2 cell lysates Lane
2: Human A549 cell lysates Lane 3: Human U-2
OS cell lysates Primary: Anti-ERCC1 (bs-1726R) at
1/1000 dilution Secondary: IRDye800CW Goat
Anti-Rabbit IgG at 1/20000 dilution Predicted
band size: 36 kDa Observed band size: 36 kDa



Paraformaldehyde-fixed, paraffin embedded (rat
testis); Antigen retrieval by boiling in sodium
citrate buffer (pH6.0) for 15min; Block
endogenous peroxidase by 3% hydrogen
peroxide for 20 minutes; Blocking buffer (normal
goat serum) at 37°C for 30min; Antibody
incubation with (ERCC1) Polyclonal Antibody,
Unconjugated (bs-1726R) at 1:200 overnight at
4°C, followed by a conjugated secondary
(sp-0023) for 20 minutes and DAB staining.



Paraformaldehyde-fixed, paraffin embedded

Important Note: This product as supplied is intended for research use only, not for use in human, therapeutic or diagnostic applications.

(human testis); Antigen retrieval by boiling in sodium citrate buffer (pH6.0) for 15min; Block endogenous peroxidase by 3% hydrogen peroxide for 20 minutes; Blocking buffer (normal goat serum) at 37°C for 30min; Incubation with (ERCC1) Polyclonal Antibody, Unconjugated (bs-1726R) at 1:200 overnight at 4°C, followed by operating according to SP Kit(Rabbit) (sp-0023) instructions and DAB staining.

— SELECTED CITATIONS —

- **[IF=7.3]** Jinhua Gu. et al. Deciphering the mechanism of *Peptostreptococcus anaerobius*-induced chemoresistance in colorectal cancer: the important roles of MDSC recruitment and EMT activation. FRONT IMMUNOL. 2023; 14: 1230681 WB ;Mouse. 37781363