

bs-25282R**[Primary Antibody]**

Hyaluronidase-1 Rabbit pAb

BioSS
ANTIBODIES

www.bioss.com.cn

sales@bioss.com.cn

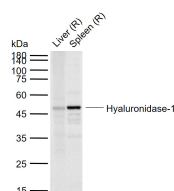
techsupport@bioss.com.cn

400-901-9800

— DATASHEET —

Host: Rabbit	Isotype: IgG	Applications: WB (1:500-2000)
Clonality: Polyclonal		Reactivity: Rat (predicted: Human)
GeneID: 3373	SWISS: Q12794	
Target: Hyaluronidase-1		
Immunogen: KLH conjugated synthetic peptide derived from human Hyaluronidase-1: 161-260/435.		Predicted MW.: 45 kDa
Purification: affinity purified by Protein A		Subcellular Location: Secreted ,Cytoplasm
Concentration: 1mg/ml		
Storage: 0.01M TBS (pH7.4) with 1% BSA, 0.02% Proclin300 and 50% Glycerol. Shipped at 4°C. Store at -20°C for one year. Avoid repeated freeze/thaw cycles.		
Background: Hyaluronidase degrades hyaluronic acid, which is an important structural proteoglycan found in basement membranes and also extracellular matrices. There are six members of the hyaluronidase family. Hyaluronidase PH20 is a GPI-anchored enzyme located on the human sperm surface and inner acrosomal membrane and plays a role in sperm penetration through the the hyaluronic acid-rich cumulus cell layer surrounding the oocyte. Abnormal expression of this gene has been implicated in degradation of basement membranes leading to tumor invasion and metastasis.		

— VALIDATION IMAGES —



Sample: Lane 1: Rat Liver tissue lysates Lane 2:

Rat Spleen tissue lysates Primary: Anti-

Hyaluronidase-1 (bs-25282R) at 1/1000 dilution

Secondary: IRDye800CW Goat Anti-Rabbit IgG at

1/20000 dilution Predicted band size: 45 kDa

Observed band size: 47 kDa