

bs-3752R**[Primary Antibody]**

Bioss
ANTIBODIES

www.bioss.com.cn

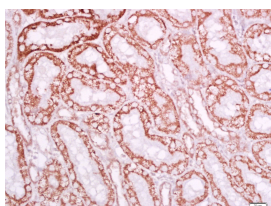
sales@bioss.com.cn

techsupport@bioss.com.cn

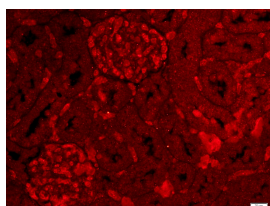
400-901-9800

Ly6a Rabbit pAb**— DATASHEET —**

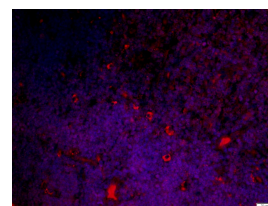
Host: Rabbit Clonality: Polyclonal Target: Ly6a Immunogen: KLH conjugated synthetic peptide derived from mouse Sca1/Ly6A/E: 15-110/134. Purification: affinity purified by Protein A Concentration: 1mg/ml Storage: 0.01M TBS (pH7.4) with 1% BSA, 0.02% Proclin300 and 50% Glycerol. Shipped at 4°C. Store at -20°C for one year. Avoid repeated freeze/thaw cycles. Background: Predicted to enable acetylcholine receptor binding activity and acetylcholine receptor inhibitor activity. Acts upstream of or within response to bacterium. Located in external side of plasma membrane. Is expressed in alimentary system; hindlimb tendon; liver; metanephros; and physiological umbilical hernia. Used to study osteoporosis. Orthologous to human LY6H (lymphocyte antigen 6 family member H). [provided by Alliance of Genome Resources, Apr 2022]	Isotype: IgG GeneID: 110454	Applications: IHC-P (1:100-500) IHC-F (1:100-500) IF (1:100-500) Flow-Cyt (2µg /Test)
		Reactivity: Mouse, Rat
		Predicted MW: 9 kDa
		Subcellular Location: Cell membrane

— VALIDATION IMAGES —

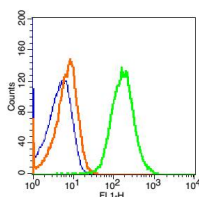
Tissue/cell: rat kidney tissue; 4% Paraformaldehyde-fixed and paraffin-embedded; Antigen retrieval: citrate buffer (0.01M, pH 6.0), Boiling bathing for 15min; Block endogenous peroxidase by 3% Hydrogen peroxide for 30min; Blocking buffer (normal goat serum, C-0005) at 37°C for 20 min; Incubation: Anti-Sca1 Polyclonal Antibody, Unconjugated(bs-3752R) 1:500, overnight at 4°C, followed by conjugation to the secondary antibody(SP-0023) and DAB(C-0010) staining



Tissue/cell: rat kidney tissue; 4% Paraformaldehyde-fixed and paraffin-embedded; Antigen retrieval: citrate buffer (0.01M, pH 6.0), Boiling bathing for 15min; Blocking buffer (normal goat serum, C-0005) at 37°C for 20 min; Incubation: Anti-Sca1 Polyclonal Antibody, Unconjugated(bs-3752R) 1:500, overnight at 4°C; The secondary antibody was Goat Anti-Rabbit IgG, Cy3 conjugated(bs-0295G-Cy3) used at 1:200 dilution for 40 minutes at 37°C.



Tissue/cell: mouse thymus tissue; 4% Paraformaldehyde-fixed and paraffin-embedded; Antigen retrieval: citrate buffer (0.01M, pH 6.0), Boiling bathing for 15min; Blocking buffer (normal goat serum, C-0005) at 37°C for 20 min; Incubation: Anti-Sca1 Polyclonal Antibody, Unconjugated(bs-3752R) 1:500, overnight at 4°C; The secondary antibody was Goat Anti-Rabbit IgG, Cy3 conjugated(bs-0295G-Cy3) used at 1:200 dilution for 40 minutes at 37°C. DAPI(5ug/ml, blue, C-0033) was used to stain the cell nuclei



Blank control: Mouse Thymus Cells(blue).
Primary Antibody: Rabbit Anti-Sca1/FITC
Conjugated antibody (bs-3752R/FITC), Dilution: 2µg in 100 µL 1X PBS containing 0.5% BSA;
Isotype Control Antibody: Rabbit IgG/FITC(orange), used under the same conditions.

Important Note: This product as supplied is intended for research use only, not for use in human, therapeutic or diagnostic applications.

— SELECTED CITATIONS —

- **[IF=17.1]** Lu Yu. et al. Apoptotic Extracellular Vesicles Induced Endothelial Cell-Mediated Autologous Stem Cell Recruitment Dominates Allogeneic Stem Cell Therapeutic Mechanism for Bone Repair. ACS NANO. 2024;XXXX(XXX):XXX-XXX IF ;Rat. 38465955
- **[IF=4.102]** Lin Cai. et al. Tumor stem-like cells isolated from MMQ cells resist to dopamine agonist treatment. Mol Cell Endocrinol. 2021 Sep;535:111396 IF ;Rat. 34271069