

bs-3754R**[Primary Antibody]****BioSS**
ANTIBODIES

www.bioss.com.cn

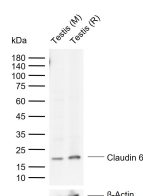
sales@bioss.com.cn

techsupport@bioss.com.cn

400-901-9800

Claudin 6 Rabbit pAb**— DATASHEET —**

Host: Rabbit Clonality: Polyclonal GeneID: 9074 Target: Claudin 6 Immunogen: KLH conjugated synthetic peptide derived from human Claudin 6: 111-220/220. < Extracellular > Purification: affinity purified by Protein A Concentration: 1mg/ml Storage: 0.01M TBS (pH7.4) with 1% BSA, 0.02% Proclin300 and 50% Glycerol. Shipped at 4°C. Store at -20°C for one year. Avoid repeated freeze/thaw cycles. Background: Tight junctions represent one mode of cell-to-cell adhesion in epithelial or endothelial cell sheets, forming continuous seals around cells and serving as a physical barrier to prevent solutes and water from passing freely through the paracellular space. These junctions are comprised of sets of continuous networking strands in the outwardly facing cytoplasmic leaflet, with complementary grooves in the inwardly facing extracytoplasmic leaflet. This gene encodes a component of tight junction strands, which is a member of the claudin family. The protein is an integral membrane protein and is one of the entry cofactors for hepatitis C virus. The gene methylation may be involved in esophageal tumorigenesis. This gene is adjacent to another family member CLDN9 on chromosome 16.[provided by RefSeq, Aug 2010]	Isotype: IgG SWISS: P56747	Applications: WB (1:500-2000) Reactivity: Mouse, Rat (predicted: Human, Rabbit, Pig, GuineaPig, Horse) Predicted MW.: 23 kDa Subcellular Location: Cell membrane
---	---	--

— VALIDATION IMAGES —

Sample: Lane 1: Mouse Testis tissue lysates Lane
2: Rat Testis tissue lysates Primary: Anti-Claudin
6 (bs-3754R) at 1/1000 dilution Secondary:
IRDye800CW Goat Anti-Rabbit IgG at 1/20000
dilution Predicted band size: 23 kDa Observed
band size: 20 kDa

— SELECTED CITATIONS —

- **[IF=1.205]** Yosuke Morizawa. et al. Sodium plays an important role in the absorption of intravesical fluid. Luts. 2021 Jan;13(1):177-182 IHC ;Rat. 32410367