

**bs-1497R****[ Primary Antibody ]****MUC1 Rabbit pAb****Bioss**  
**ANTIBODIES**

www.bioss.com.cn

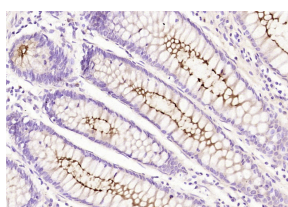
sales@bioss.com.cn

techsupport@bioss.com.cn

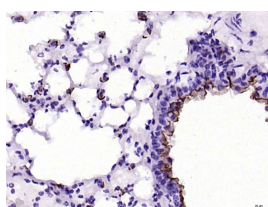
400-901-9800

**— DATASHEET —**

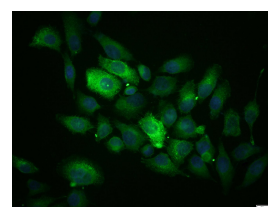
<b>Host:</b> Rabbit	<b>Isotype:</b> IgG2b	<b>Applications:</b> IHC-P (1:100-500) <b>IHC-F</b> (1:100-500) <b>IF</b> (1:100-500) <b>ICC/IF</b> (1:100-500)  <b>Reactivity:</b> Human, Mouse, Rat  <b>Predicted MW.:</b> 20/138 kDa  <b>Subcellular Location:</b> Secreted ,Cell membrane ,Cytoplasm ,Nucleus
<b>Clonality:</b> Polyclonal		
<b>GeneID:</b> 4582	<b>SWISS:</b> P15941	
<b>Target:</b> MUC1		
<b>Immunogen:</b> KLH conjugated synthetic peptide derived from human MUC1: 1101-1255/1255. < Cytoplasmic >		
<b>Purification:</b> affinity purified by Protein A		
<b>Concentration:</b> 1mg/ml		
<b>Storage:</b> 0.01M TBS (pH7.4) with 1% BSA, 0.02% Proclin300 and 50% Glycerol. Shipped at 4°C. Store at -20°C for one year. Avoid repeated freeze/thaw cycles.		
<b>Background:</b> MUC1 is a large cell surface mucin glycoprotein expressed by most glandular and ductal epithelial cells and some hematopoietic cell lineages. It is expressed on most secretory epithelium, including mammary gland and some hematopoietic cells. It is expressed abundantly in lactating mammary glands and overexpressed abundantly in >90% breast carcinomas and metastases. Transgenic MUC1 has been shown to associate with all four ceBB receptors and localize with erbB1 (EGFR) in lactating glands. The MUC1 gene contains seven exons and produces several different alternatively spliced variants. The major expressed form of MUC1 uses all seven exons and is a type 1 transmembrane protein with a large extracellular tandem repeat domain. The tandem repeat domain is highly O glycosylated and alterations in glycosylation have been shown in epithelial cancer cells.		

**— VALIDATION IMAGES —**

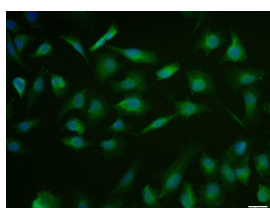
Paraformaldehyde-fixed, paraffin embedded (human colon carcinoma); Antigen retrieval by boiling in sodium citrate buffer (pH6.0) for 15min; Block endogenous peroxidase by 3% hydrogen peroxide for 20 minutes; Blocking buffer (normal goat serum) at 37°C for 30min; Antibody incubation with (MUC1) Polyclonal Antibody, Unconjugated (bs-1497R) at 1:200 overnight at 4°C, followed by operating according to SP Kit(Rabbit) (sp-0023) instructions and DAB staining.



Paraformaldehyde-fixed, paraffin embedded (mouse lung); Antigen retrieval by boiling in sodium citrate buffer (pH6.0) for 15min; Block endogenous peroxidase by 3% hydrogen peroxide for 20 minutes; Blocking buffer (normal goat serum) at 37°C for 30min; Antibody incubation with (MUC1) Polyclonal Antibody, Unconjugated (bs-1497R) at 1:200 overnight at 4°C, followed by operating according to SP Kit(Rabbit) (sp-0023) instructions and DAB staining.



Tissue/cell: MCF-7 cell; 4% Paraformaldehyde-fixed; Triton X-100 at room temperature for 20 min; Blocking buffer (normal goat serum, C-0005) at 37°C for 20 min; Antibody incubation with (MUC1) Polyclonal Antibody, Unconjugated (bs-1497R) 1:100, 90 minutes at 37°C; followed by a conjugated Goat Anti-Rabbit IgG antibody (bs-0295G-FITC) at 37°C for 90 minutes, DAPI (5ug/ml, blue, C-0033) was used to stain the cell nuclei.



MCF7 cell; 4% Paraformaldehyde-fixed; Triton

Important Note: This product as supplied is intended for research use only, not for use in human, therapeutic or diagnostic applications.

X-100 at room temperature for 20 min; Blocking buffer (normal goat serum, C-0005) at 37°C for 20 min; Antibody incubation with (MUC1) polyclonal Antibody, Unconjugated (bs-1497R) 1:100, 90 minutes at 37°C; followed by a conjugated Goat Anti-Rabbit IgG antibody at 37°C for 90 minutes, DAPI (blue, C02-04002) was used to stain the cell nuclei.

---

## — SELECTED CITATIONS —

---

- **[IF=20.5]** Ni Zixin. et al. Influenza virus uses mGluR2 as an endocytic receptor to enter cells. NAT MICROBIOL. 2024 Jun;;1-14 IF ;Mouse. 38849624
- **[IF=8.46]** Taki, K., et al. "GNASR201H and KrasG12D cooperate to promote murine pancreatic tumorigenesis recapitulating human intraductal papillary mucinous neoplasm." Oncogene 35.18 (2016): 2407-2412. IHC ;="Mouse". 26257060
- **[IF=7.1]** Kiyoshi Saeki. et al. Acvr1b Loss Increases Formation of Pancreatic Precancerous Lesions From Acinar and Ductal Cells of Origin. CELL MOL GASTROENTER. 2024 Jan;18:101387 IHC ;Mouse. 39111635
- **[IF=3.101]** Cao Y et al. Detection of three tumor biomarkers in human lung cancer serum using single particle ICP-MS combined with magnetic immunoassay. Spectrochimica Acta Part B: Atomic Spectroscopy, 105797 (2020). Other ;. doi:10.1016/j.sab.2020.105797
- **[IF=2.32]** Chen ZZ et al. An improved class of fluorescent silica nanoparticles for indirect immunofluorescence detection of MCF-7 cells. Optical Materials 88 (2019) 147–154. ICC ;Human. 10.1016/j.optmat.2018.11.019